



UNIT C

2 BED / 2 BATH

AC AREA 961 sq ft / 89.28 M²

TERRACE AREA 58 sq ft / 5.39 M²

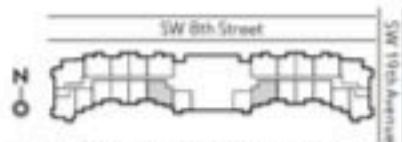
TOTAL 1,019 sq ft / 96.78 M²



TERRACE SIZE PER UNIT

C1 113 sq ft / 10.50 M²

C2 0 sq ft / 0 M²



A Development by **IASTOR** Exclusive Sales & Marketing by **CONVERSA**

ORAL REPRESENTATIONS CANNOT BE RELIED UPON AS CORRECTLY STATING REPRESENTATIONS OF THE DEVELOPER. FOR CORRECT REPRESENTATIONS, MAKE REFERENCE TO THE DOCUMENTS REQUIRED BY SECTION 718.503, FLORIDA STATUTES, TO BE FURNISHED BY A DEVELOPER TO A BUYER OR LESSEE. All dimensions are approximate and all floor plans and development plans are subject to change. This floor plan represents the typical floor plan for the residence type indicated and is provided for informational purposes only. The actual floor plan of the residence may differ. All features listed for the residences are representative only, and the Developer reserves the right, without notice to or approval by the Buyer, to make changes or substitutions of similar or better quality for any features, materials and equipment. All dimensions are taken to the outside finished surface of the exterior walls, and to the centerline of interior demising walls, and vary from the dimensions that would be determined based upon the description of the "Unit" set forth in the Declaration of Condominium (which generally includes only the interior airspace between the unfinished interior surfaces of the walls bounding the unit).

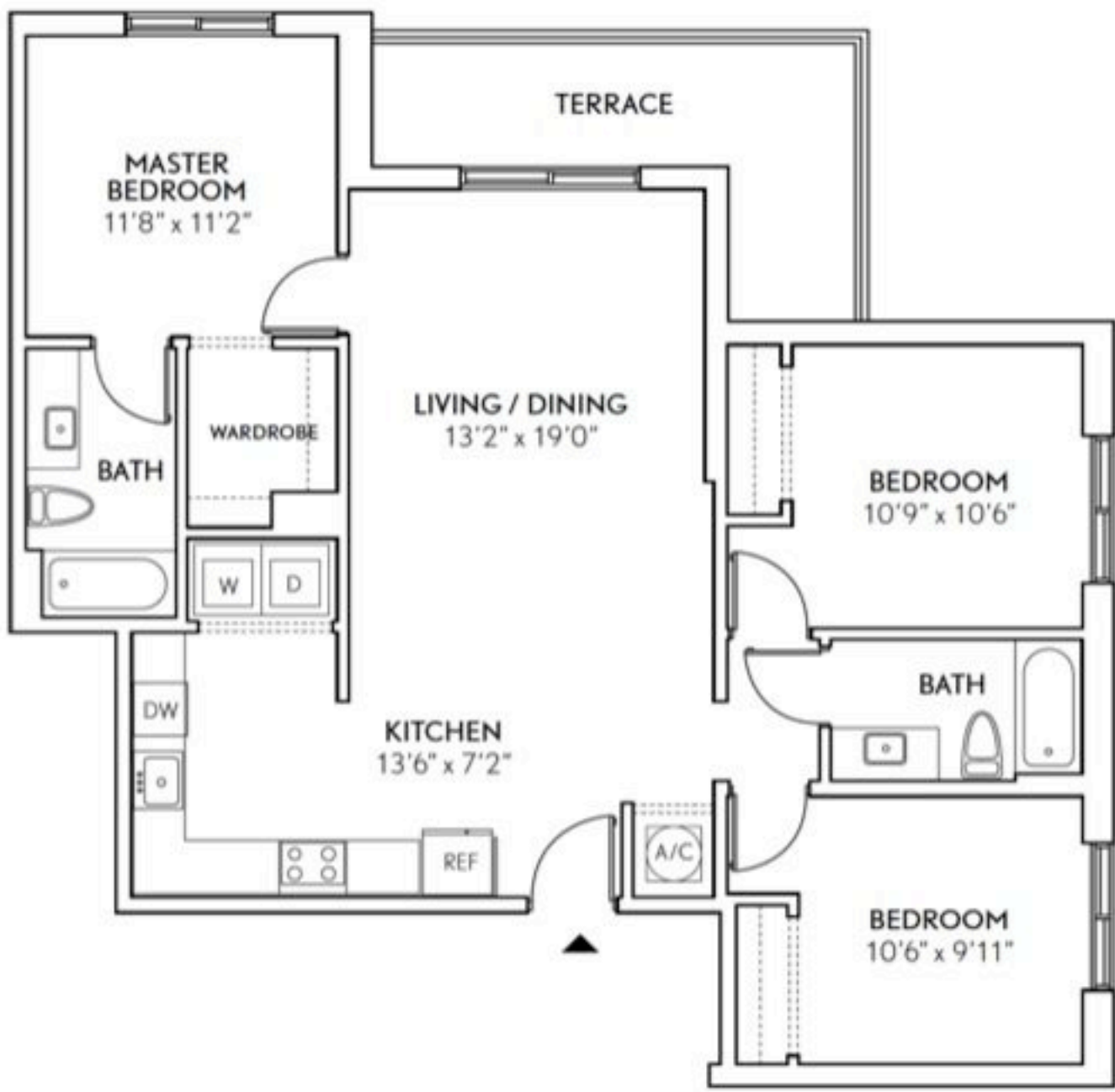
Design by: Orange Dog Design Group, Inc. | orangedogdesigngroup.com



UNIT E

3 BED / 2 BATH

AC AREA	1,176 sq ft / 109.25 M ²
TERRACE AREA	112 sq ft / 10.41 M ²
TOTAL	1,288 sq ft / 119.66 M²



A Development by **ASTOR** Exclusive Sales & Marketing by **CERRERA**

ORAL REPRESENTATIONS CANNOT BE RELIED UPON AS CORRECTLY STATING REPRESENTATIONS OF THE DEVELOPER. FOR CORRECT REPRESENTATIONS, MAKE REFERENCE TO THE DOCUMENTS REQUIRED BY SECTION 718.503, FLORIDA STATUTES, TO BE FURNISHED BY A DEVELOPER TO A BUYER OR LESSEE. All dimensions are approximate and all floor plans and development plans are subject to change. This floor plan represents the typical floor plan for the residence type indicated and is provided for informational purposes only. The actual floor plan of the residence may differ. All features listed for the residences are representative only, and the Developer reserves the right, without notice to or approval by the Buyer, to make changes or substitutions of similar or better quality for any features, materials and equipment. All dimensions are taken to the outside finished surface of the exterior walls, and to the centerline of interior demising walls, and vary from the dimensions that would be determined based upon the description of the "Unit" set forth in the Declaration of Condominium (which generally includes only the interior airspace between the unfinished interior surfaces of the walls bounding the unit).



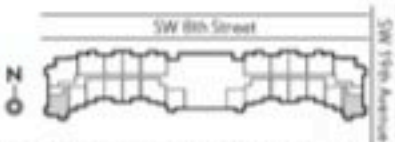
UNIT B

2 BED / 1 BATH

AC AREA 876 sq ft / 81.38 M²

TERRACE AREA 93 sq ft / 8.64 M²

TOTAL 969 sq ft / 90.02 M²



A Development by **PIASTOR** Exclusive Sales & Marketing by **CREVEND**

ORAL REPRESENTATIONS CANNOT BE RELIED UPON AS CORRECTLY STATING REPRESENTATIONS OF THE DEVELOPER. FOR CORRECT REPRESENTATIONS, MAKE REFERENCE TO THE DOCUMENTS REQUIRED BY SECTION 718.503, FLORIDA STATUTES, TO BE FURNISHED BY A DEVELOPER TO A BUYER OR LESSEE. All dimensions are approximate and all floor plans and development plans are subject to change. This floor plan represents the typical floor plan for the residence type indicated and is provided for informational purposes only. The actual floor plan of the residence may differ. All features listed for the residences are representative only, and the Developer reserves the right, without notice to or approval by the Buyer, to make changes or substitutions of similar or better quality for any features, materials and equipment. All dimensions are taken to the outside finished surface of the exterior walls, and to the centerline of interior demising walls, and vary from the dimensions that would be determined based upon the description of the "Unit" set forth in the Declaration of Condominium (which generally includes only the interior airspace between the unfinished interior surfaces of the walls bounding the unit).

Design by Orange Dog Design Group, Inc. | www.orangeogdesigngroup.com



UNIT D

2 BED / 2 BATH

AC AREA 975 sq ft / 90.58 M²

TERRACE AREA 58 sq ft / 5.39 M²

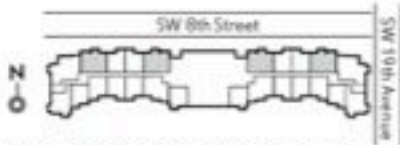
TOTAL 1,033 sq ft / 95.97 M²



TERRACE SIZE PER UNIT

D1 112 sq ft / 10.41 M²

D2 240 sq ft / 22.30 M²



A Development by **ASTOR** Exclusive Sales & Marketing by **CAVERA**

ORAL REPRESENTATIONS CANNOT BE RELIED UPON AS CORRECTLY STATING REPRESENTATIONS OF THE DEVELOPER. FOR CORRECT REPRESENTATIONS, MAKE REFERENCE TO THE DOCUMENTS REQUIRED BY SECTION 718.503, FLORIDA STATUTES, TO BE FURNISHED BY A DEVELOPER TO A BUYER OR LESSEE. All dimensions are approximate and all floor plans and development plans are subject to change. This floor plan represents the typical floor plan for the residence type indicated and is provided for informational purposes only. The actual floor plan of the residence may differ. All features listed for the residences are representative only, and the Developer reserves the right, without notice to or approval by the Buyer, to make changes or substitutions of similar or better quality for any features, materials and equipment. All dimensions are taken to the outside finished surface of the exterior walls, and to the centerline of interior demising walls, and vary from the dimensions that would be determined based upon the description of the "Unit" set forth in the Declaration of Condominium (which generally includes only the interior airspace between the unfinished interior surfaces of the walls bounding the unit).

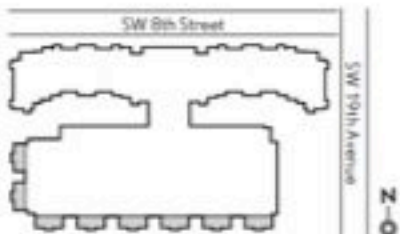
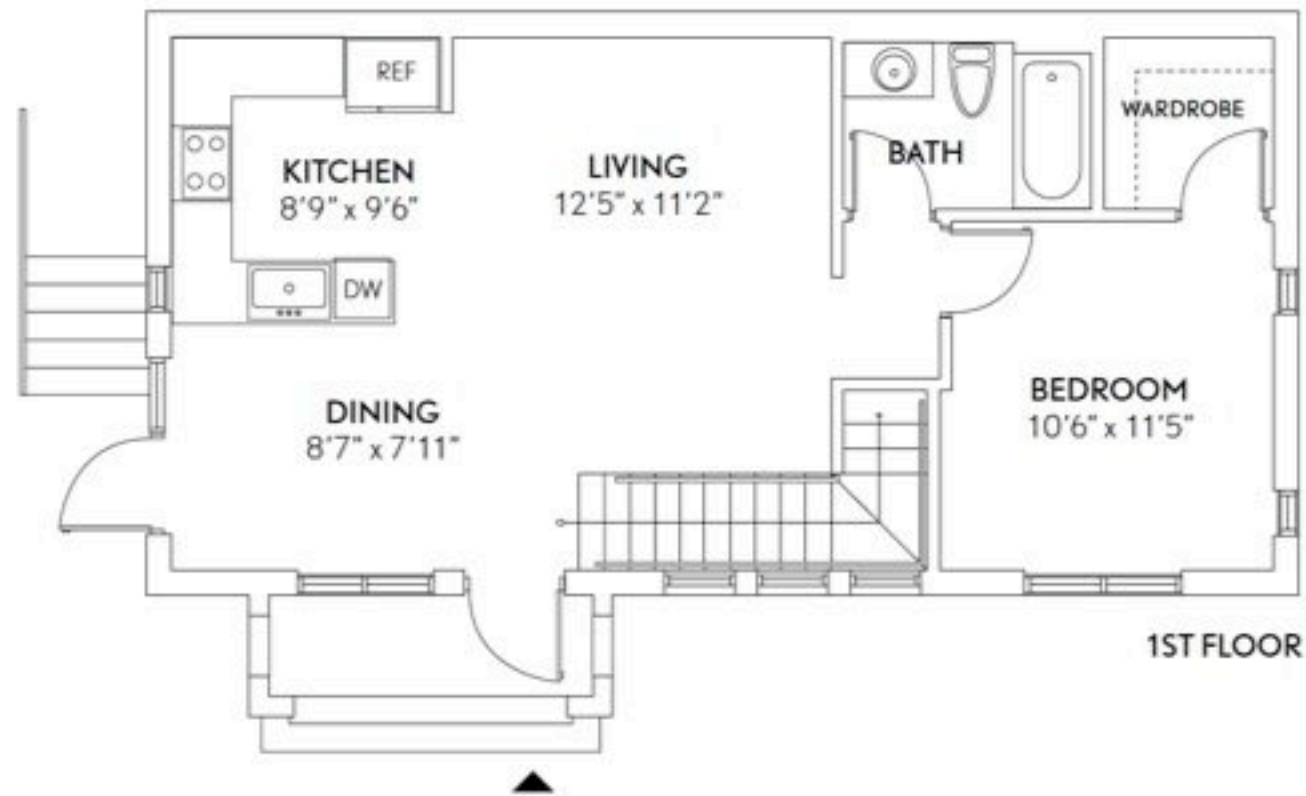
TOWNHOUSE

3 BED / 3 BATH

AC AREA 1,464 sq ft / 136.01 M²

TERRACE AREA 479 sq ft / 4.45 M²

TOTAL 1,514.90 sq ft / 140.46 M²



A Development by **ASTOR** Exclusive Sales & Marketing by **CERVENA**

ORAL REPRESENTATIONS CANNOT BE RELIED UPON AS CORRECTLY STATING REPRESENTATIONS OF THE DEVELOPER. FOR CORRECT REPRESENTATIONS, MAKE REFERENCE TO THE DOCUMENTS REQUIRED BY SECTION 718.503, FLORIDA STATUTES, TO BE FURNISHED BY A DEVELOPER TO A BUYER OR LESSEE. All dimensions are approximate and all floor plans and development plans are subject to change. This floor plan represents the typical floor plan for the residence type indicated and is provided for informational purposes only. The actual floor plan of the residence may differ. All features listed for the residences are representative only, and the Developer reserves the right, without notice to or approval by the Buyer, to make changes or substitutions of similar or better quality for any features, materials and equipment. All dimensions are taken to the outside finished surface of the exterior walls, and to the centerline of interior demising walls, and vary from the dimensions that would be determined based upon the description of the "Unit" set forth in the Declaration of Condominium (which generally includes only the interior airspace between the unfinished interior surfaces of the walls bounding the unit).

Design by: Orange Dog Design Group, Inc. | www.orangedogdesigngroup.com



UNIT A

1 BED / 1 BATH

AC AREA 660 sq ft / 61.37 M²

TERRACE AREA 58 sq ft / 5.39 M²

TOTAL 718 sq ft / 66.76 M²



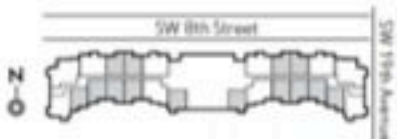
TERRACE SIZE PER UNIT

A1 118 sq ft / 10.96 M²

A2 47 sq ft / 4.37 M²

A3 0 sq ft / 0 M²

A4 270 sq ft / 25.08 M²



A Development by **ASTOR** Exclusive Sales & Marketing by **convenn**

ORAL REPRESENTATIONS CANNOT BE RELIED UPON AS CORRECTLY STATING REPRESENTATIONS OF THE DEVELOPER. FOR CORRECT REPRESENTATIONS, MAKE REFERENCE TO THE DOCUMENTS REQUIRED BY SECTION 718.503, FLORIDA STATUTES, TO BE FURNISHED BY A DEVELOPER TO A BUYER OR LESSEE. All dimensions are approximate and all floor plans and development plans are subject to change. This floor plan represents the typical floor plan for the residence type indicated and is provided for informational purposes only. The actual floor plan of the residence may differ. All features listed for the residences are representative only, and the Developer reserves the right, without notice to or approval by the Buyer, to make changes or substitutions of similar or better quality for any features, materials and equipment. All dimensions are taken to the outside finished surface of the exterior walls, and to the centerline of interior demising walls, and vary from the dimensions that would be determined based upon the description of the "Unit" set forth in the Declaration of Condominium (which generally includes only the interior airspace between the unfinished interior surfaces of the walls bounding the unit).

Design by Orange Dog Design Group, Inc. | orangedogdesigngroup.com