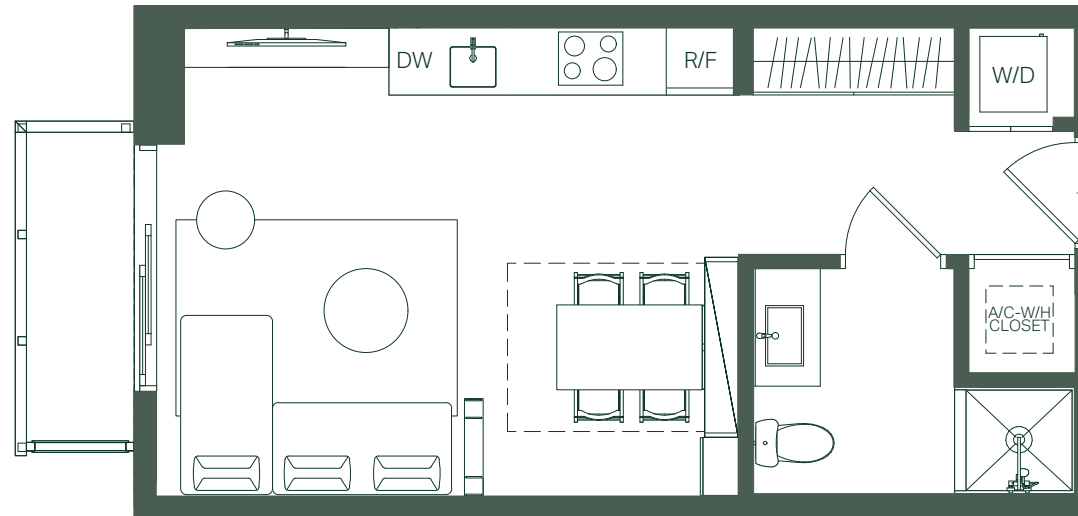


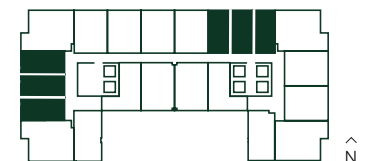
# UNIT E

RESIDENCES  
LINES 06, 07, 08, 14, 15, 16

## STUDIO 1 BATHROOM



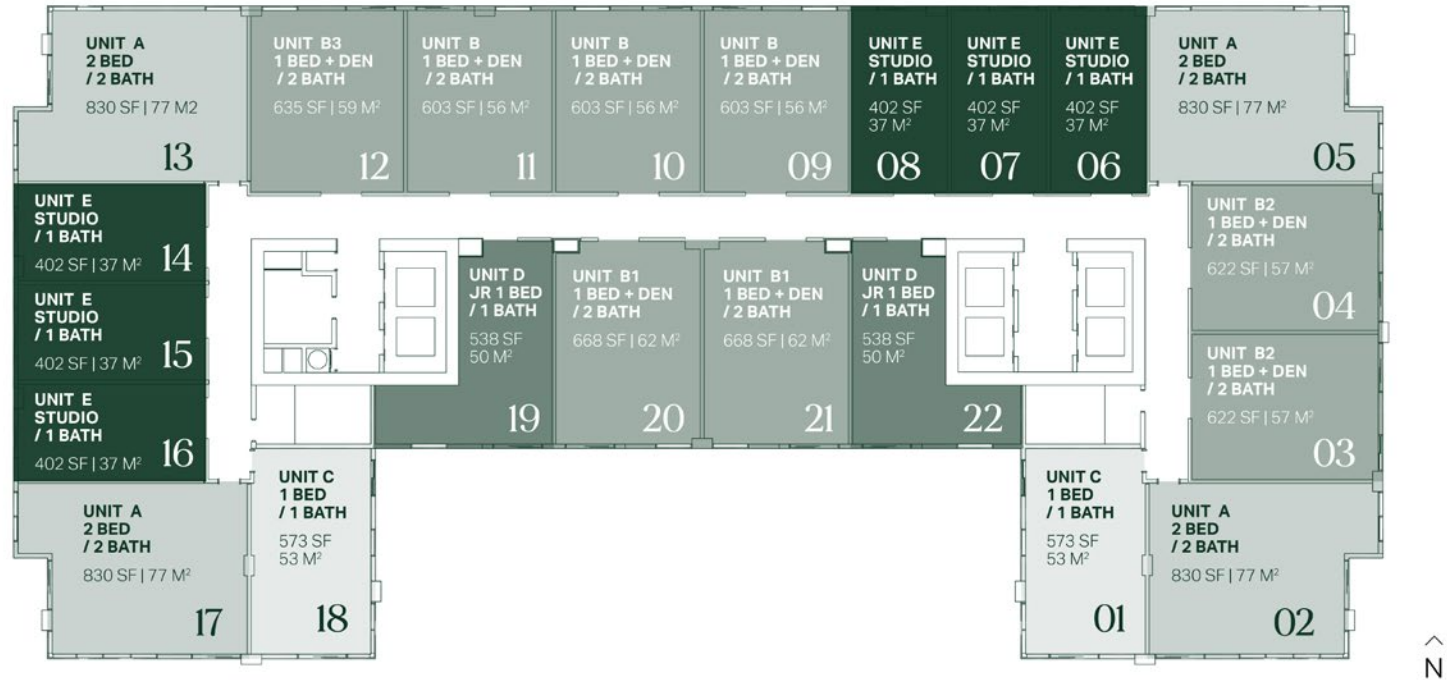
INTERIOR	402 SF	37 M <sup>2</sup>
EXTERIOR	40 SF	4 M <sup>2</sup>
<b>TOTAL</b>	<b>442 SF</b>	<b>41 M<sup>2</sup></b>



# THE KEYPLAN

## THE DETAILS

- 6 | Studios
- 2 | Jr. 1 Bed
- 2 | 1 Bed
- 8 | 1 Bed + Den
- 4 | 2 BD

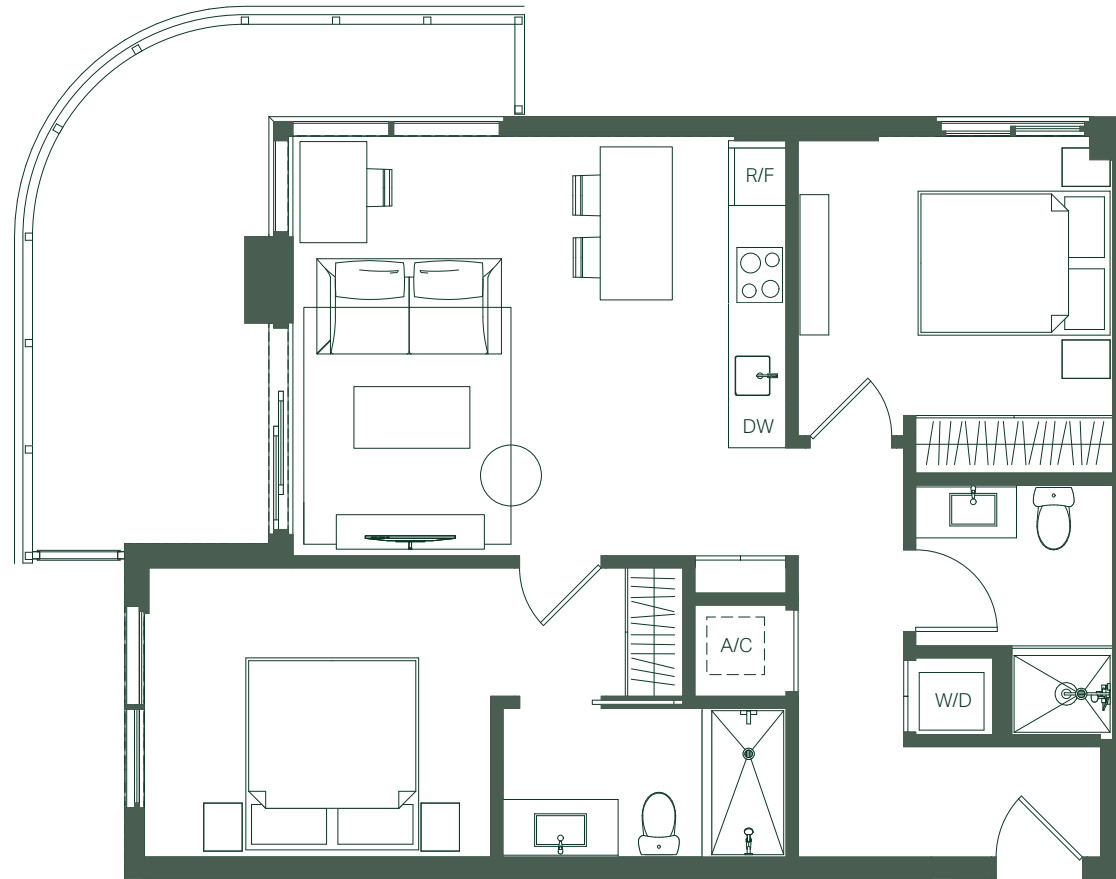


These drawings are conceptual only and are for the convenience of reference. They should not be relied upon as representations, express or implied, of the final detail of the residences. Units shown are examples of unit types and may not depict actual units. Stated square footages are ranges for a particular unit type and are measured to the exterior boundaries of the exterior walls and the centerline of interior demising walls and in fact vary from the area that would be determined by using the description and definition of the unit set forth in the declaration (which generally only includes the interior airspace between the perimeter walls and excludes interior structural components). Note that measurements of rooms set forth on this floorplan are generally taken at the greatest points of each given room (as if the room were a perfect rectangle), without regards for any cutouts. Accordingly, the area of the actual room will typically be smaller than the product obtained by multiplying the stated length times width. All dimensions are approximate and may vary with actual construction, and all floor plans and development plans are subject to change.

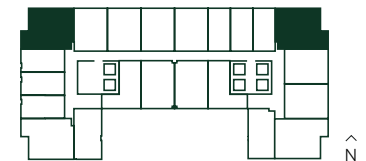
# UNIT A.2

RESIDENCES  
LINES 05, 13

—  
2 BEDROOMS  
2 BATHROOMS



INTERIOR	830 SF	77 M <sup>2</sup>
EXTERIOR	187 SF	17 M <sup>2</sup>
<b>TOTAL</b>	<b>1,017 SF</b>	<b>94 M<sup>2</sup></b>

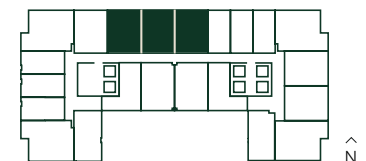
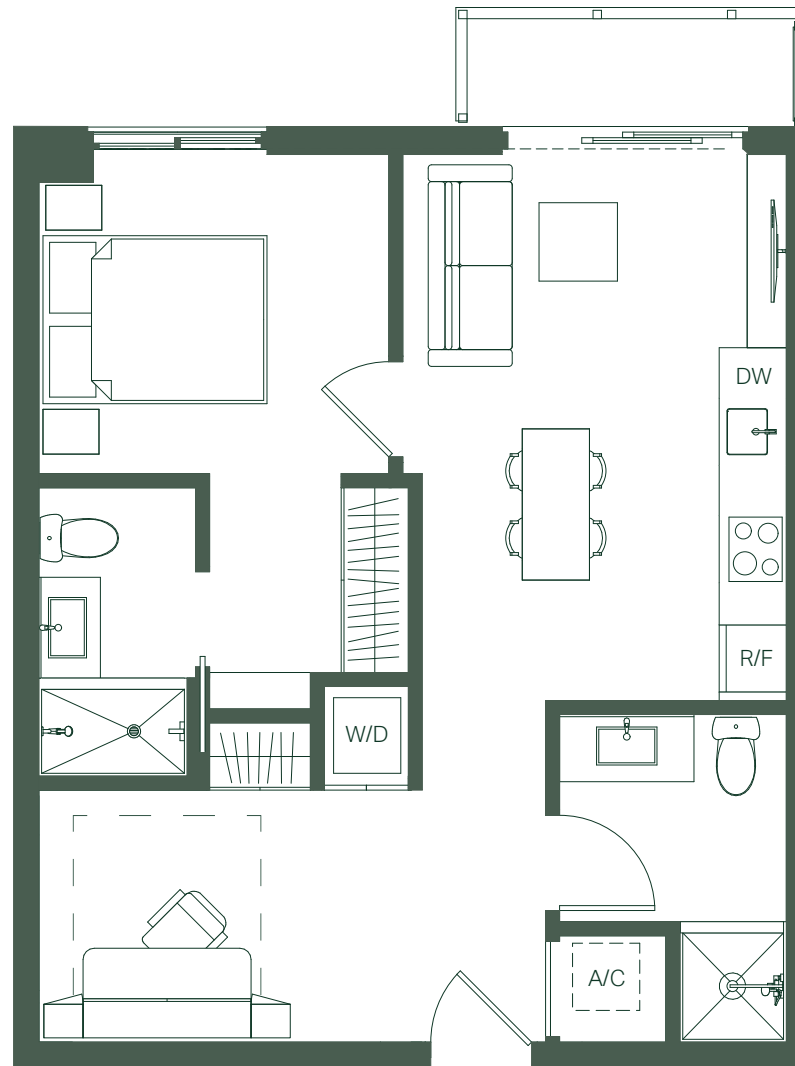


# UNIT B

RESIDENCES  
LINES 09, 10, 11

—  
1 BEDROOM + DEN  
2 BATHROOMS

INTERIOR	603 SF	56 M <sup>2</sup>
EXTERIOR	40 SF	4 M <sup>2</sup>
<b>TOTAL</b>	<b>643 SF</b>	<b>60 M<sup>2</sup></b>

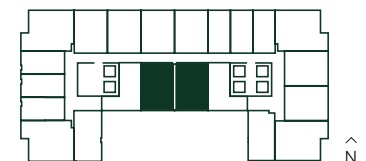
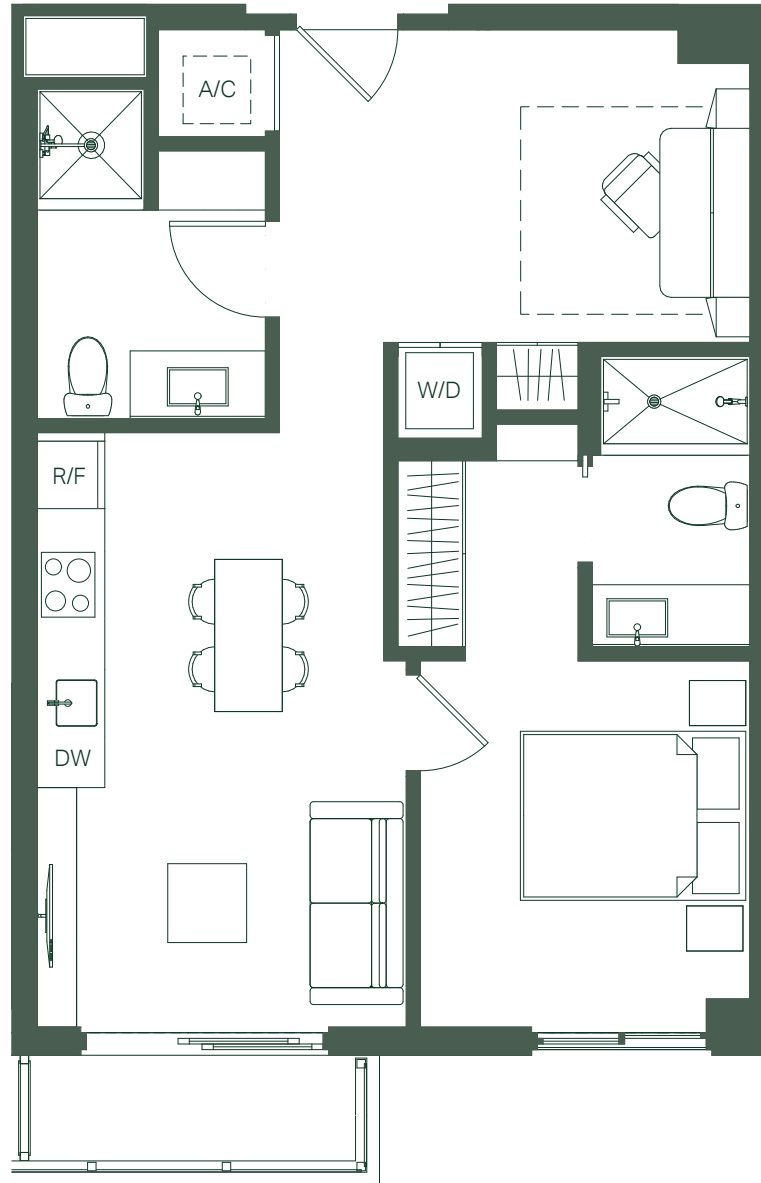


# UNIT B.1

RESIDENCES  
LINES 20, 21

—  
1 BEDROOM + DEN  
2 BATHROOMS

INTERIOR	668 SF	62 M <sup>2</sup>
EXTERIOR	40 SF	4 M <sup>2</sup>
<b>TOTAL</b>	<b>708 SF</b>	<b>66 M<sup>2</sup></b>

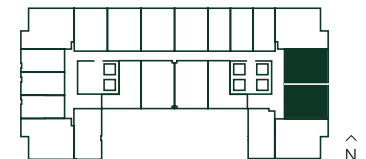
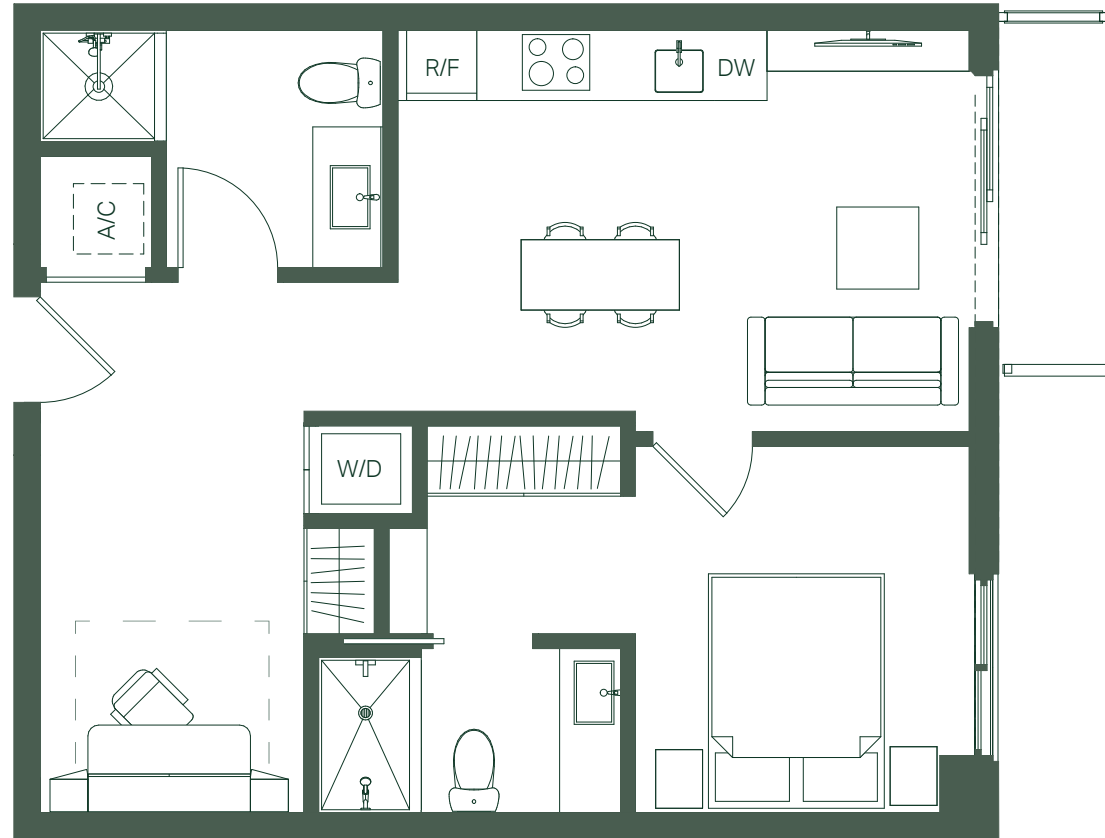


# UNIT B.2

RESIDENCES  
LINES 03, 04

—  
1 BEDROOM + DEN  
2 BATHROOMS

INTERIOR	622 SF	57 M <sup>2</sup>
EXTERIOR	43 SF	4 M <sup>2</sup>
<b>TOTAL</b>	<b>665 SF</b>	<b>61 M<sup>2</sup></b>

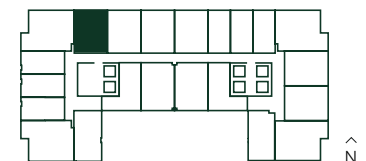
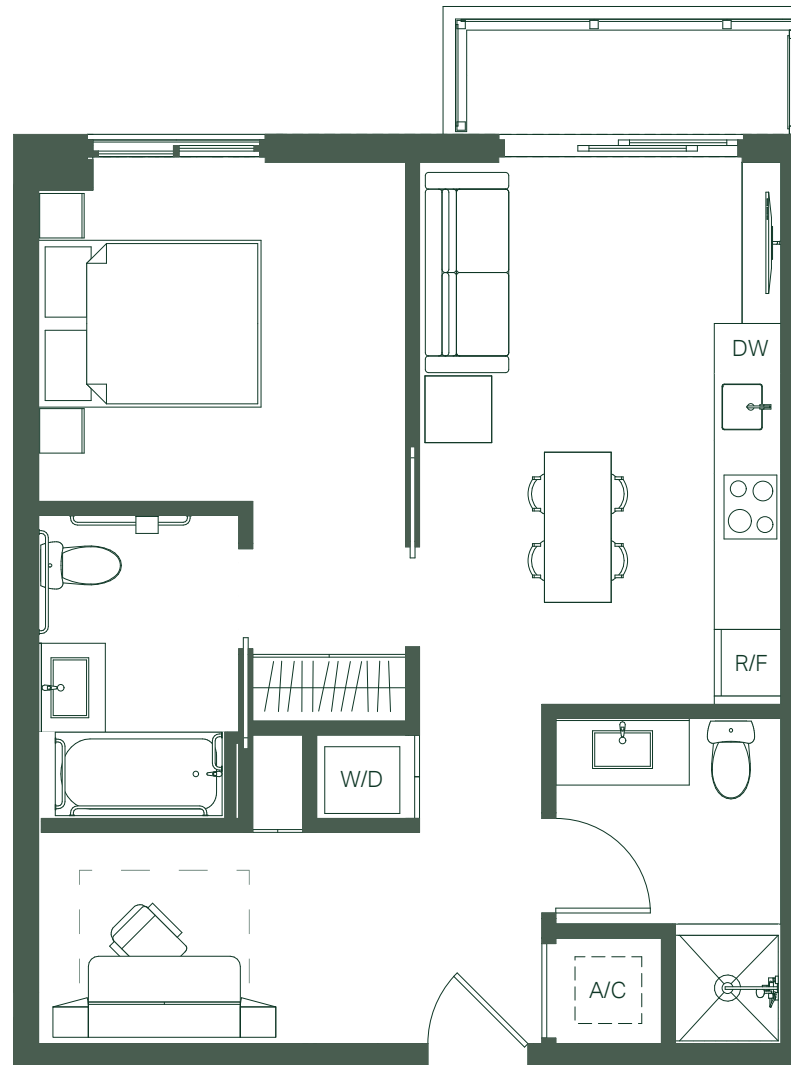


# UNIT B.3

RESIDENCES  
LINES 12

—  
1 BEDROOM + DEN  
2 BATHROOMS

INTERIOR	635 SF	59 M <sup>2</sup>
EXTERIOR	40 SF	4 M <sup>2</sup>
<b>TOTAL</b>	<b>675 SF</b>	<b>63 M<sup>2</sup></b>

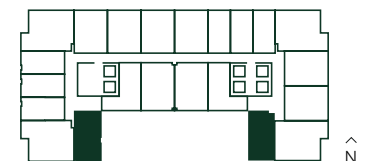
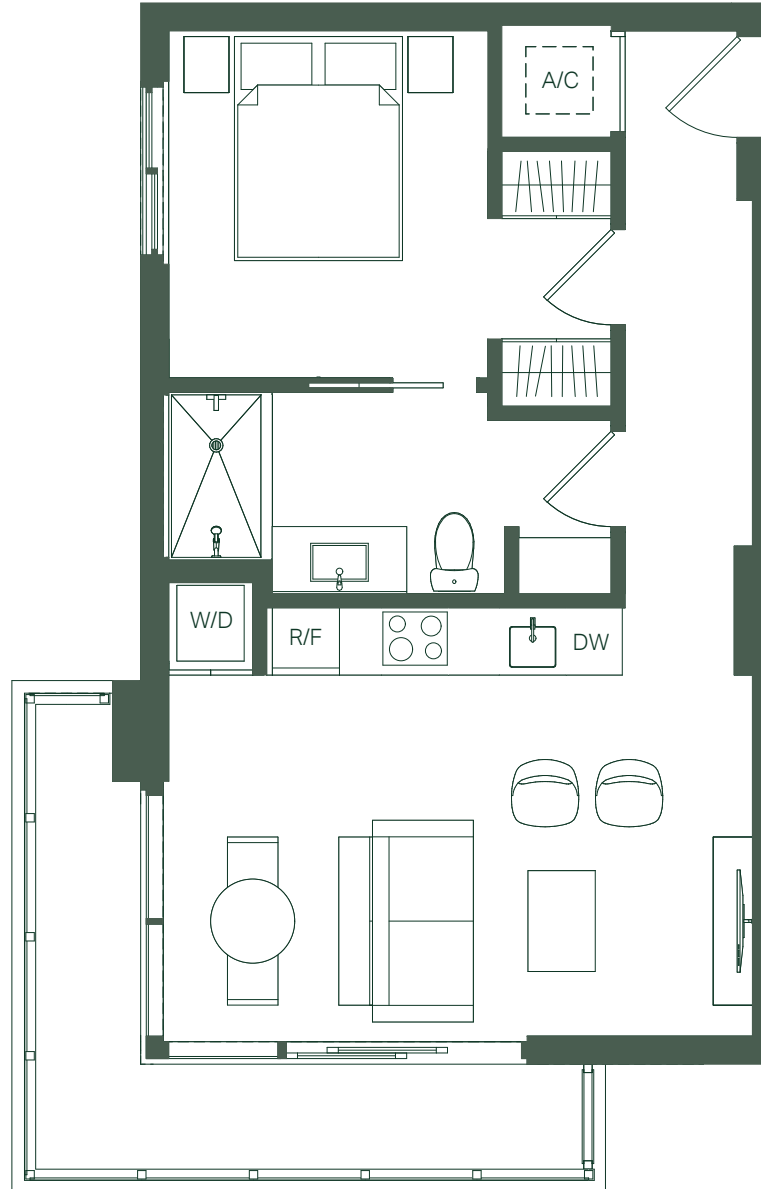


# UNIT C

RESIDENCES  
LINES 01,18

—  
1 BEDROOM  
1 BATHROOM

INTERIOR	573 SF	53 M <sup>2</sup>
EXTERIOR	130 SF	12 M <sup>2</sup>
<b>TOTAL</b>	<b>703 SF</b>	<b>65 M<sup>2</sup></b>





# UNIT D

RESIDENCES  
LINES 19, 22

JR. 1 BEDROOM  
1 BATHROOM

INTERIOR	538 SF	50 M <sup>2</sup>
EXTERIOR	40 SF	4 M <sup>2</sup>
<b>TOTAL</b>	<b>578 SF</b>	<b>54 M<sup>2</sup></b>

