



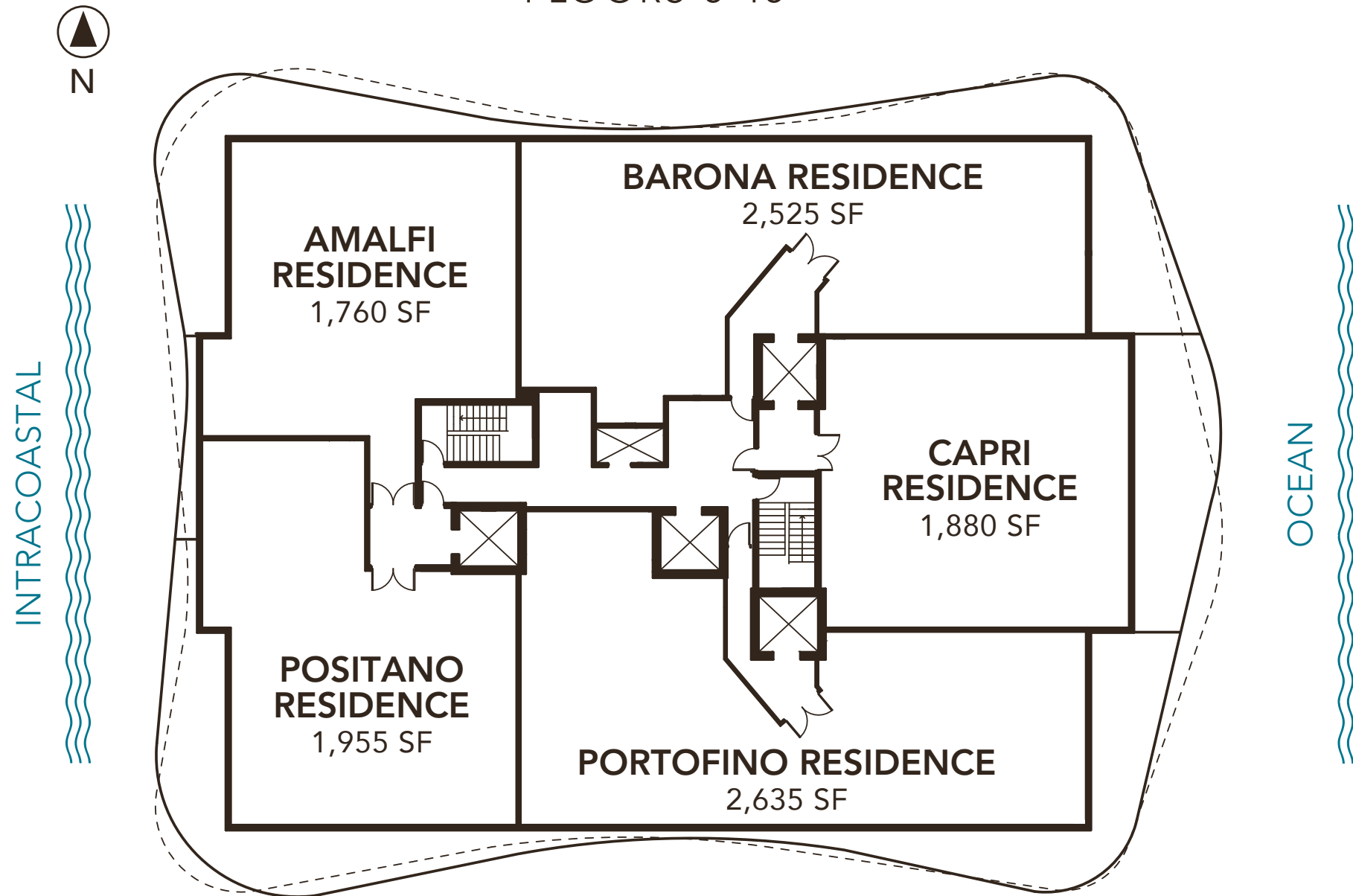
Sabbia  
BEACH

RESIDENCE  
FLOOR PLANS

FLOORS 5-17



KEY PLAN  
FLOORS 5-15



AMALFI  
RESIDENCE

<b>2 BEDROOMS 2.5 BATHROOMS</b>	
A/C AREA	1,760 SF
BALCONY	490 SF
TOTAL	2,250 SF

BARONA  
RESIDENCE

<b>3 BEDROOMS + DEN 4 BATHROOMS</b>	
A/C AREA	2,525 SF
BALCONY	480 SF
TOTAL	3,005 SF

CAPRI  
RESIDENCE

<b>2 BEDROOMS + DEN 2.5 BATHROOMS</b>	
A/C AREA	1,880 SF
BALCONY	420 SF
TOTAL	2,300 SF

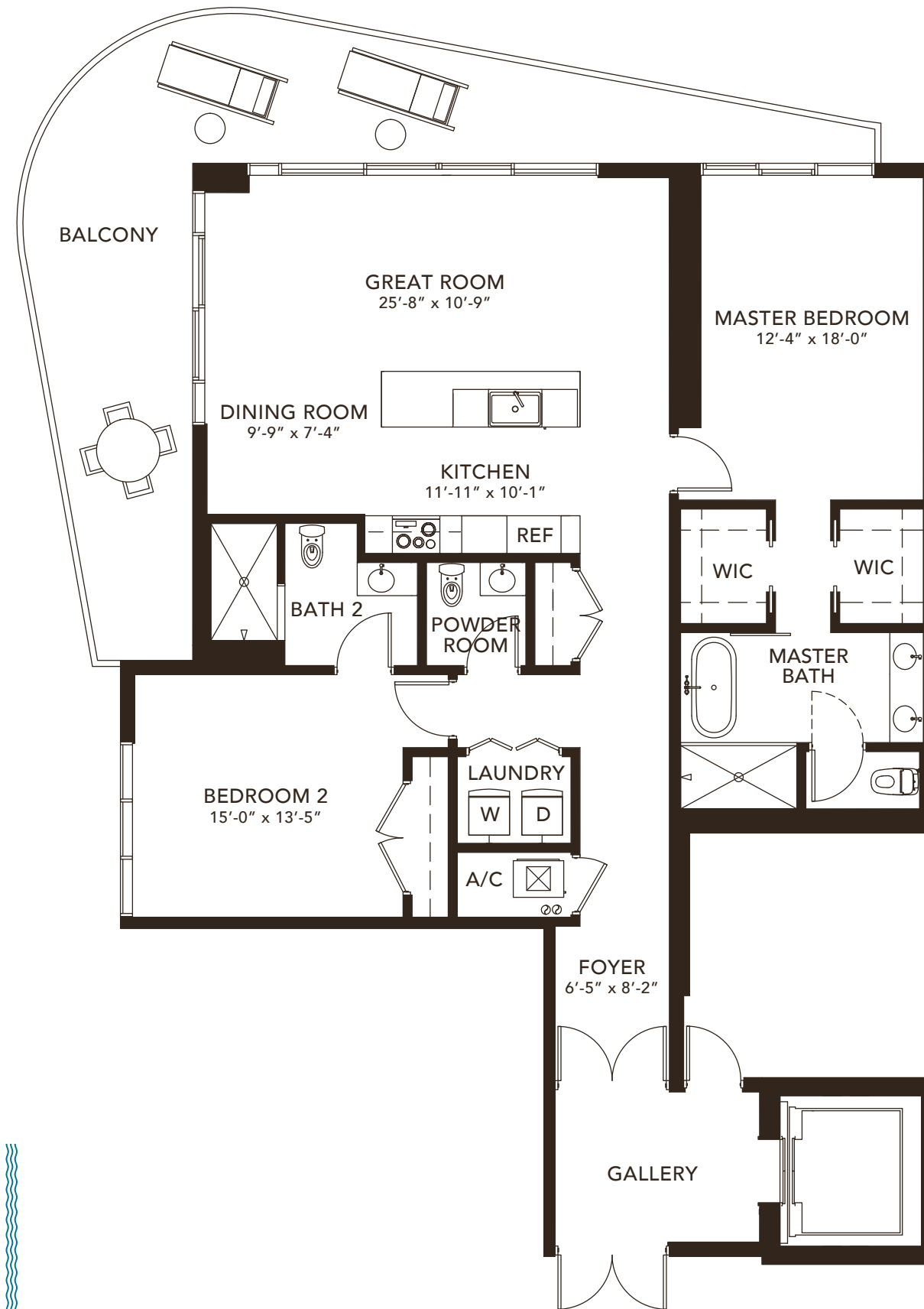
PORTOFINO  
RESIDENCE

<b>3 BEDROOMS + DEN 4.5 BATHROOMS</b>	
A/C AREA	2,635 SF
BALCONY	480 SF
TOTAL	3,115 SF

POSITANO  
RESIDENCE

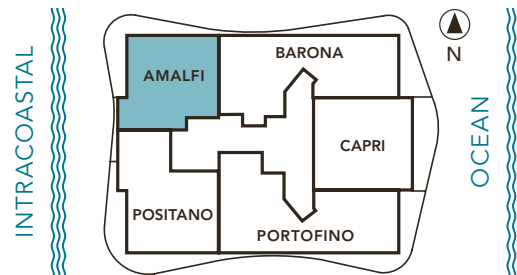
<b>3 BEDROOMS 3 BATHROOMS</b>	
A/C AREA	1,955 SF
BALCONY	490 SF
TOTAL	2,445 SF

*Bernardo Fort*  
Bernardo Fort Brescia

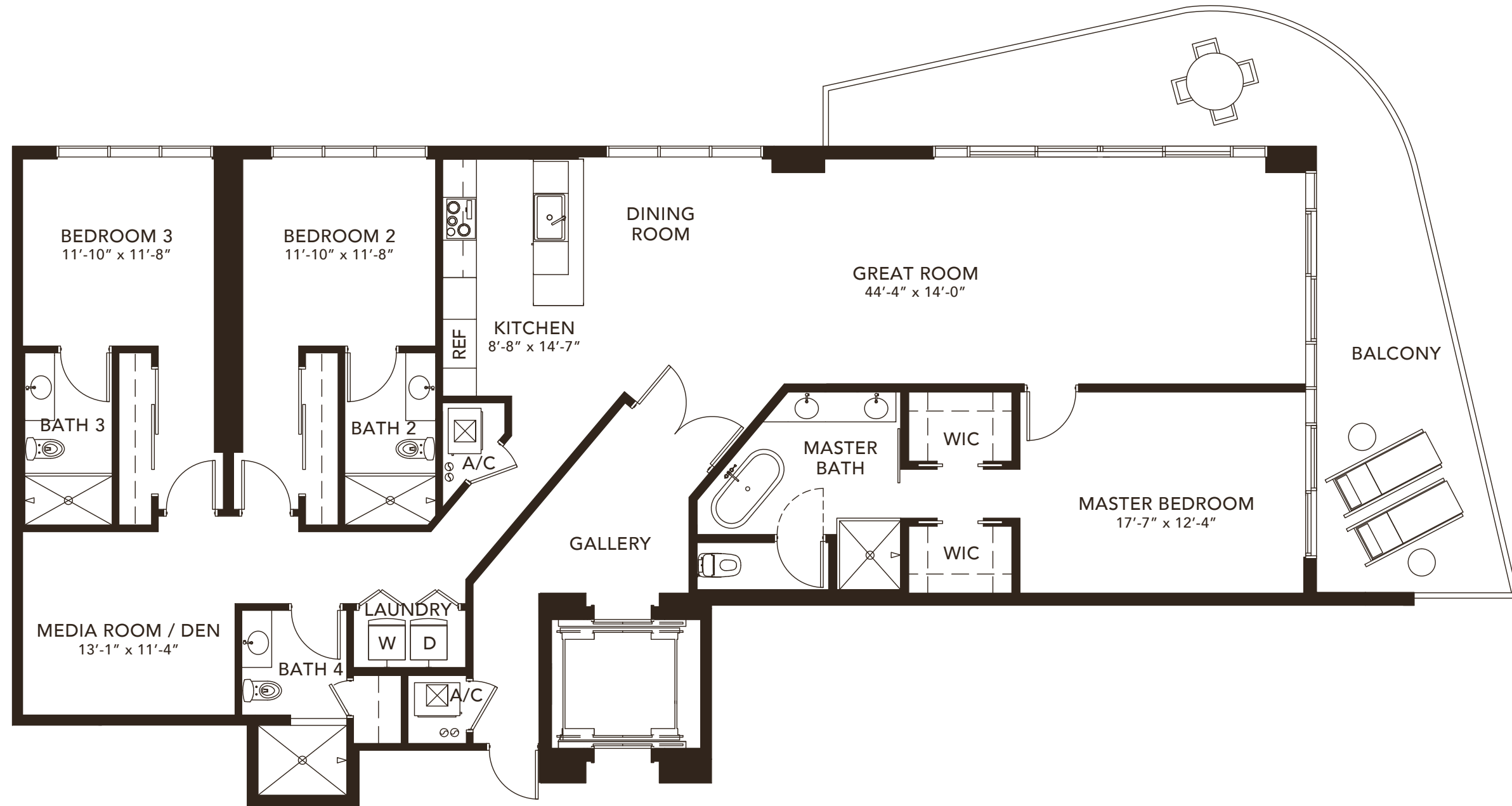


AMALFI  
RESIDENCE

2 BEDROOMS 2.5 BATHROOMS	
A/C AREA	1,760 SF
BALCONY	490 SF
TOTAL	2,250 SF

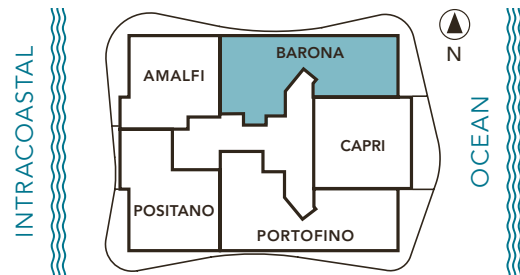


*Bernardo Fort*  
Bernardo Fort Brescia



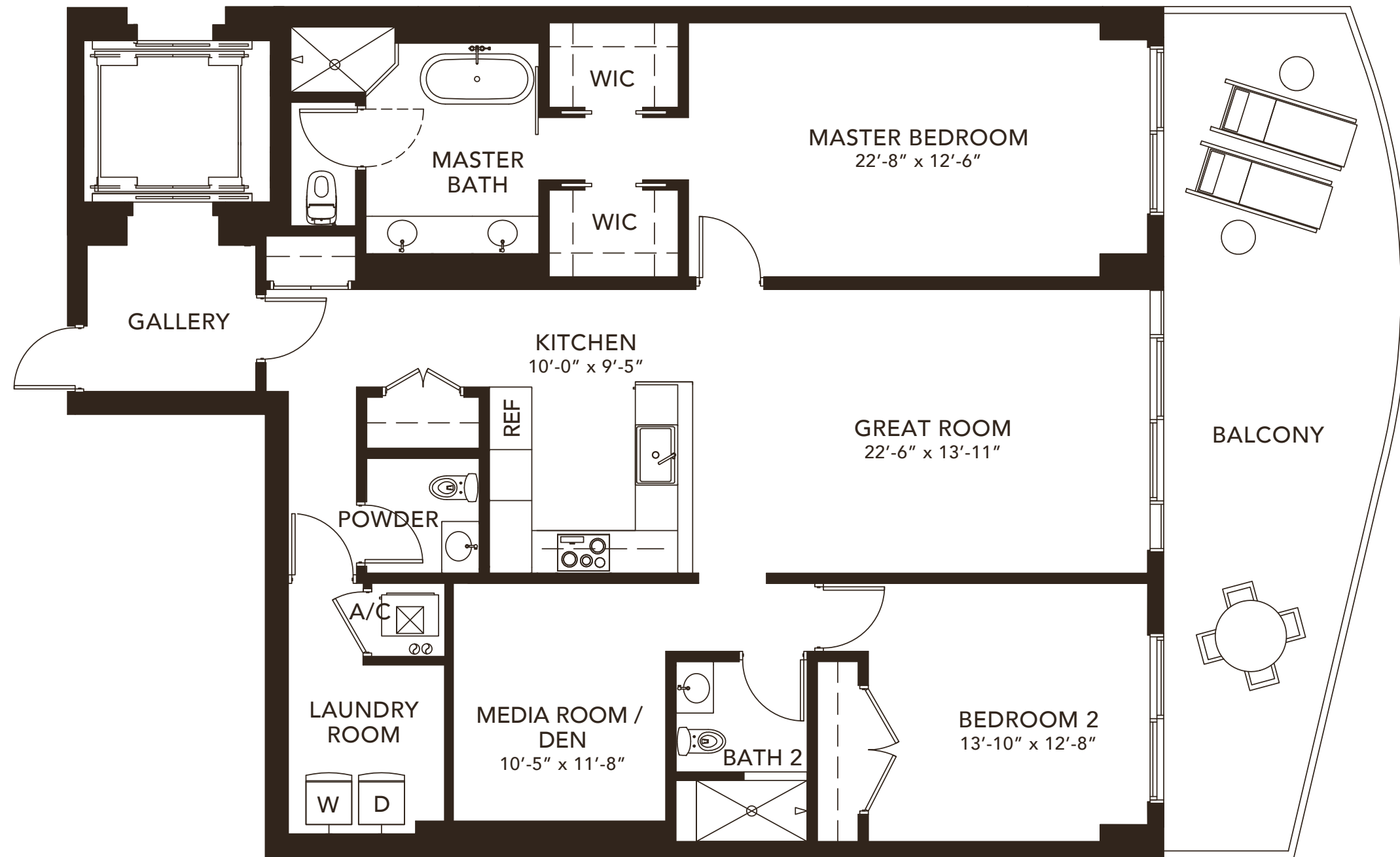
BARONA  
RESIDENCE

<b>3 BEDROOMS + DEN 4 BATHROOMS</b>	
A/C AREA	2,525 SF
BALCONY	480 SF
<b>TOTAL</b>	<b>3,005 SF</b>



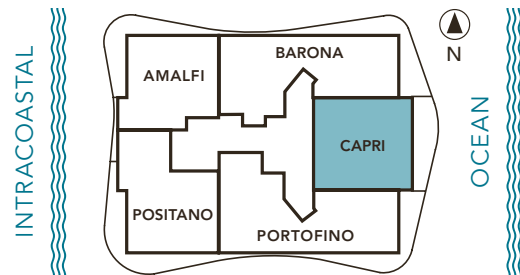
*Bernardo Fort*  
Bernardo Fort Brescia

PLANS, MATERIALS AND SPECIFICATIONS ARE SUBJECT TO ARCHITECTURAL AND OTHER REVISIONS AT THE SOLE DISCRETION OF THE DEVELOPER, BUILDER OR ARCHITECT, OR AS MAY BE REQUIRED BY LAW. FLOOR PLANS SHOWN ARE NOT TO ANY PARTICULAR SCALE. ALL DIMENSIONS ARE MEASURED TO THE EXTERIOR BOUNDARIES OF THE EXTERIOR WALLS, CORRIDOR WALLS AND TO THE CENTERLINE OF INTERIOR DEMISING WALLS AND MAY VARY FROM THE DESCRIPTION AND DEFINITION OF THE "UNIT" SET FORTH IN THE DECLARATION. ALL DIMENSIONS ARE APPROXIMATE, AND ALL FLOOR PLANS AND DEVELOPMENT PLANS ARE SUBJECT TO CHANGE.

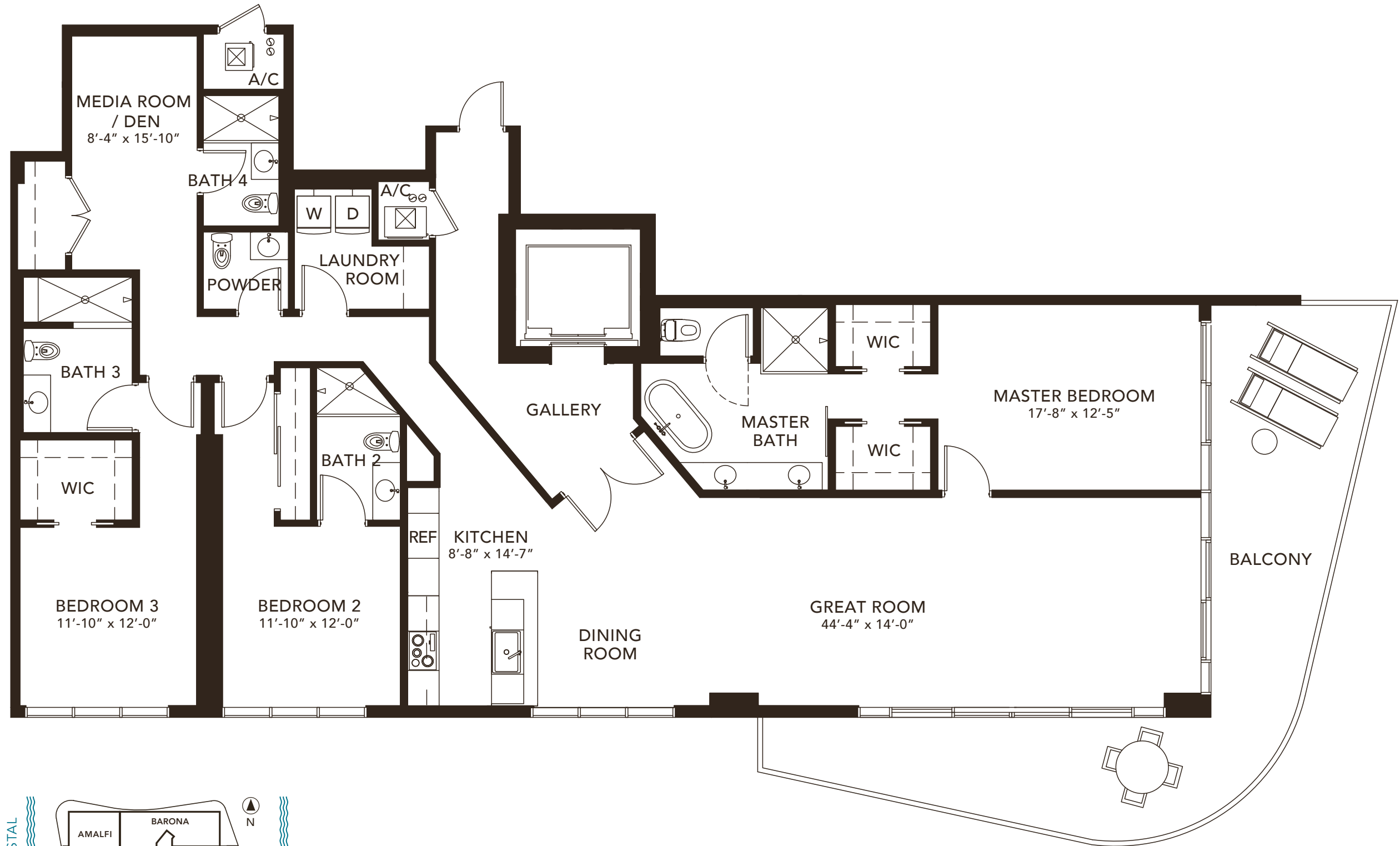


CAPRI  
RESIDENCE

<b>2 BEDROOMS + DEN</b>	
<b>2.5 BATHROOMS</b>	
A/C AREA	1,880 SF
BALCONY	420 SF
TOTAL	2,300 SF

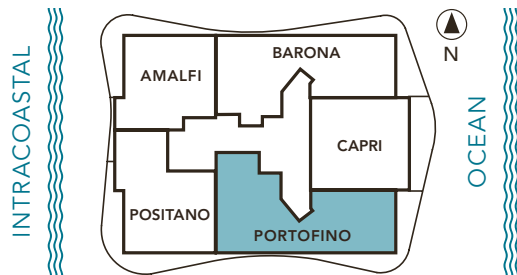


*Bernardo Fort*  
Bernardo Fort Brescia



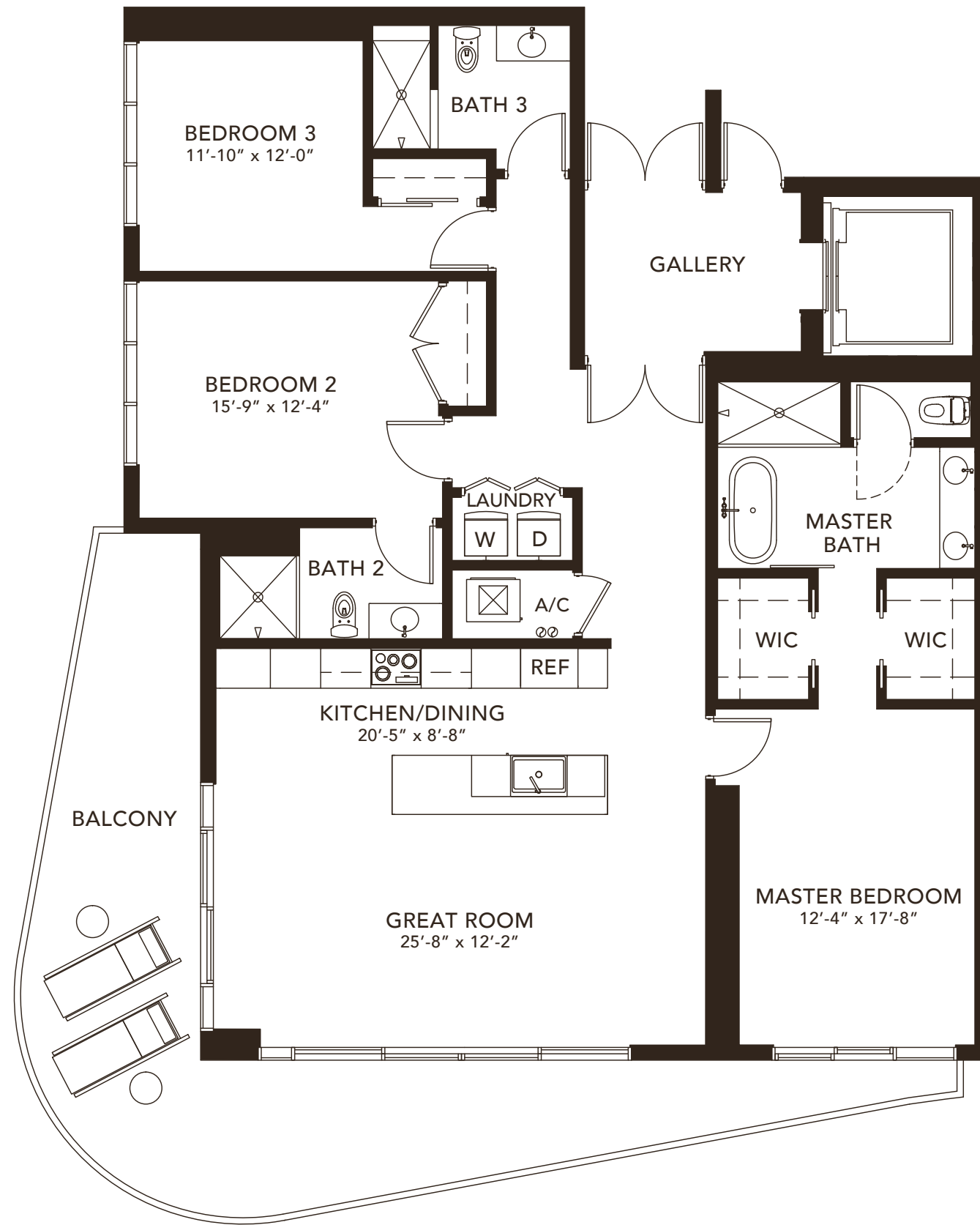
PORTOFINO  
RESIDENCE

<b>3 BEDROOMS + DEN</b>	
<b>4.5 BATHROOMS</b>	
A/C AREA	2,635 SF
BALCONY	480 SF
TOTAL	3,115 SF



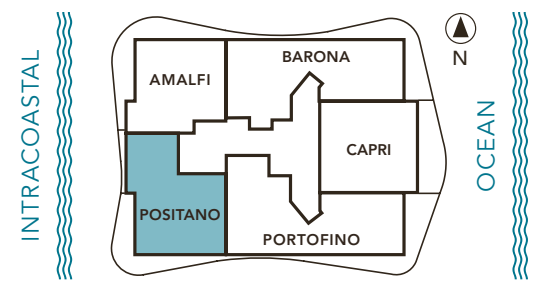
*Bernardo Fort*  
Bernardo Fort Brescia

PLANS, MATERIALS AND SPECIFICATIONS ARE SUBJECT TO ARCHITECTURAL AND OTHER REVISIONS AT THE SOLE DISCRETION OF THE DEVELOPER, BUILDER OR ARCHITECT, OR AS MAY BE REQUIRED BY LAW. FLOOR PLANS SHOWN ARE NOT TO ANY PARTICULAR SCALE. ALL DIMENSIONS ARE MEASURED TO THE EXTERIOR BOUNDARIES OF THE EXTERIOR WALLS, CORRIDOR WALLS AND TO THE CENTERLINE OF INTERIOR DEMISING WALLS AND MAY VARY FROM THE DESCRIPTION AND DEFINITION OF THE "UNIT" SET FORTH IN THE DECLARATION. ALL DIMENSIONS ARE APPROXIMATE, AND ALL FLOOR PLANS AND DEVELOPMENT PLANS ARE SUBJECT TO CHANGE.



POSITANO  
RESIDENCE

<b>3 BEDROOMS</b>	
<b>3 BATHROOMS</b>	
A/C AREA	1,955 SF
BALCONY	490 SF
<b>TOTAL</b>	<b>2,445 SF</b>



*Bernardo Fort*  
Bernardo Fort Brescia

PLANS, MATERIALS AND SPECIFICATIONS ARE SUBJECT TO ARCHITECTURAL AND OTHER REVISIONS AT THE SOLE DISCRETION OF THE DEVELOPER, BUILDER OR ARCHITECT, OR AS MAY BE REQUIRED BY LAW. FLOOR PLANS SHOWN ARE NOT TO ANY PARTICULAR SCALE. ALL DIMENSIONS ARE MEASURED TO THE EXTERIOR BOUNDARIES OF THE EXTERIOR WALLS, CORRIDOR WALLS AND TO THE CENTERLINE OF INTERIOR DEMISING WALLS AND MAY VARY FROM THE DESCRIPTION AND DEFINITION OF THE "UNIT" SET FORTH IN THE DECLARATION. ALL DIMENSIONS ARE APPROXIMATE, AND ALL FLOOR PLANS AND DEVELOPMENT PLANS ARE SUBJECT TO CHANGE.




# Sabbia

BEACH

ON THE OCEAN | OF THE OCEAN

730 NORTH OCEAN BOULEVARD, POMPANO BEACH, FL 33062

 This offering is subject to errors, omissions, prior sale, change of price, or withdrawal without notice, and not intended to solicit currently listed property. This is not an offer to sell or solicitation of offers to buy condominium units in states where such offer or solicitation cannot be made. Prices, plans, and specifications are subject to change without notice. Void in states where prohibited. Additional restrictions may apply. Artist's conceptual renderings.

ORAL REPRESENTATION CANNOT BE RELIED UPON AS CORRECTLY STATING THE REPRESENTATIONS OF THE DEVELOPER. FOR CORRECT REPRESENTATIONS, MAKE REFERENCE TO THIS BROCHURE AND TO THE DOCUMENTS REQUIRED BY SECTION 718.503, FLORIDA STATUTES, TO BE FURNISHED BY A DEVELOPER TO A BUYER OR LESSEE.

Developed by:

**FERNBROOK**  
FLORIDA

Exclusive Sales  
and Marketing by:

  
HEMISPHERE

Architecture by:

**ARQUITECTONICA**

Interior Design by:

*Interiors* by **STEVEN G. MA**  
Interior Design

Advertising & Interactive by **LGD** Miami





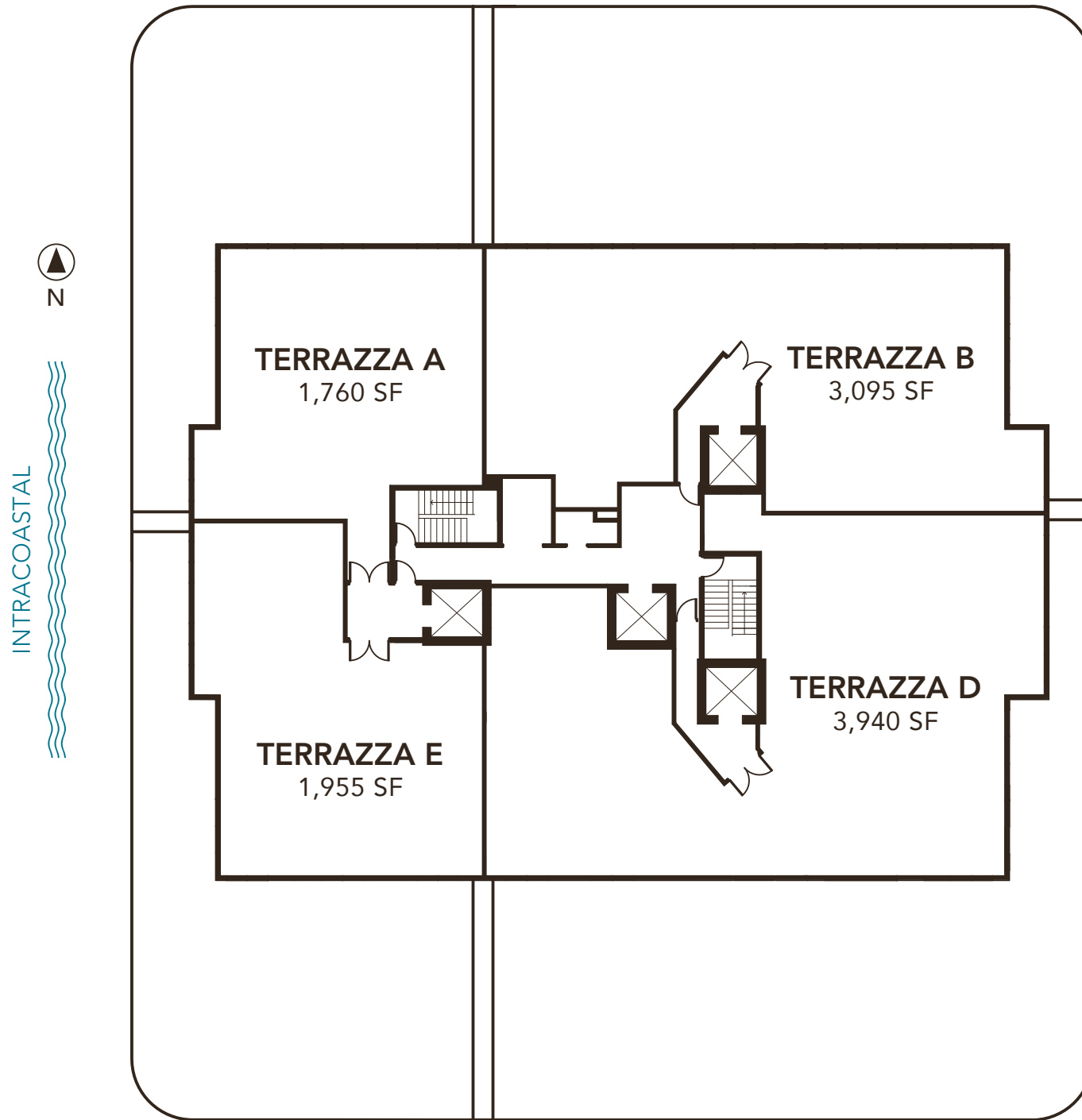
Sabbia  
BEACH

TERRACE RESIDENCE  
FLOOR PLANS

FLOOR 4



## KEY PLAN FLOOR 4



### TERRAZZA A

<b>2 BEDROOMS 2.5 BATHROOMS</b>	
A/C AREA	1,760 SF
TERRACE	2,200 SF
-----	
TOTAL	3,960 SF

### TERRAZZA B

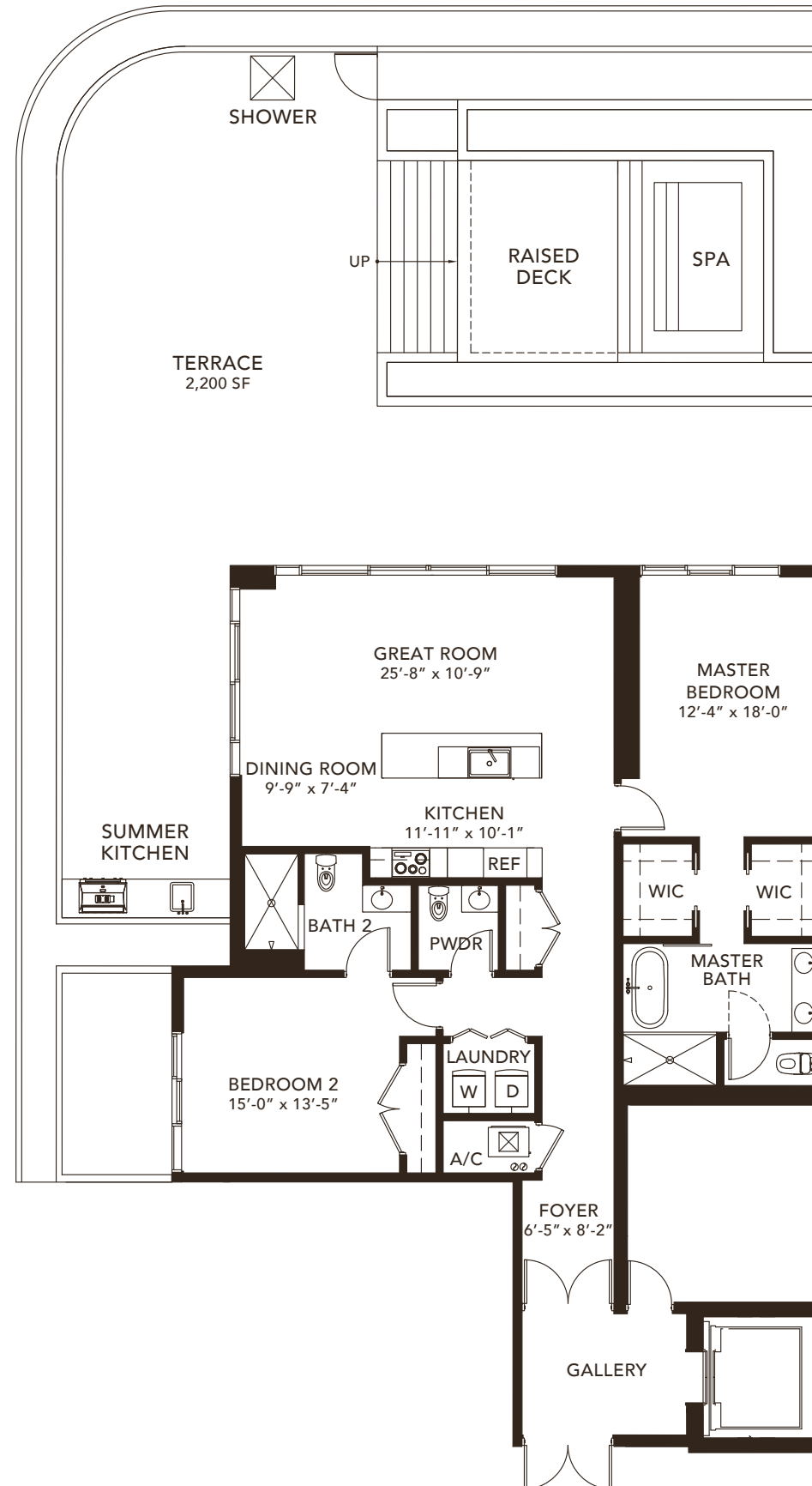
<b>3 BEDROOMS 3.5 BATHROOMS</b>	
A/C AREA	3,095 SF
TERRACE	3,750 SF
-----	
TOTAL	6,845 SF

### TERRAZZA D

<b>4 BEDROOMS + DEN 4.5 BATHROOMS</b>	
A/C AREA	3,940 SF
TERRACE	3,900 SF
-----	
TOTAL	7,840 SF

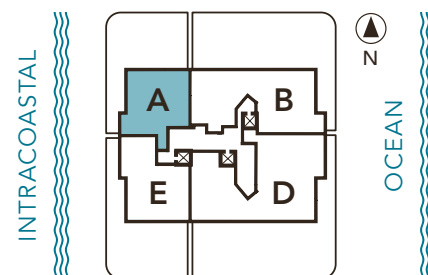
### TERRAZZA E

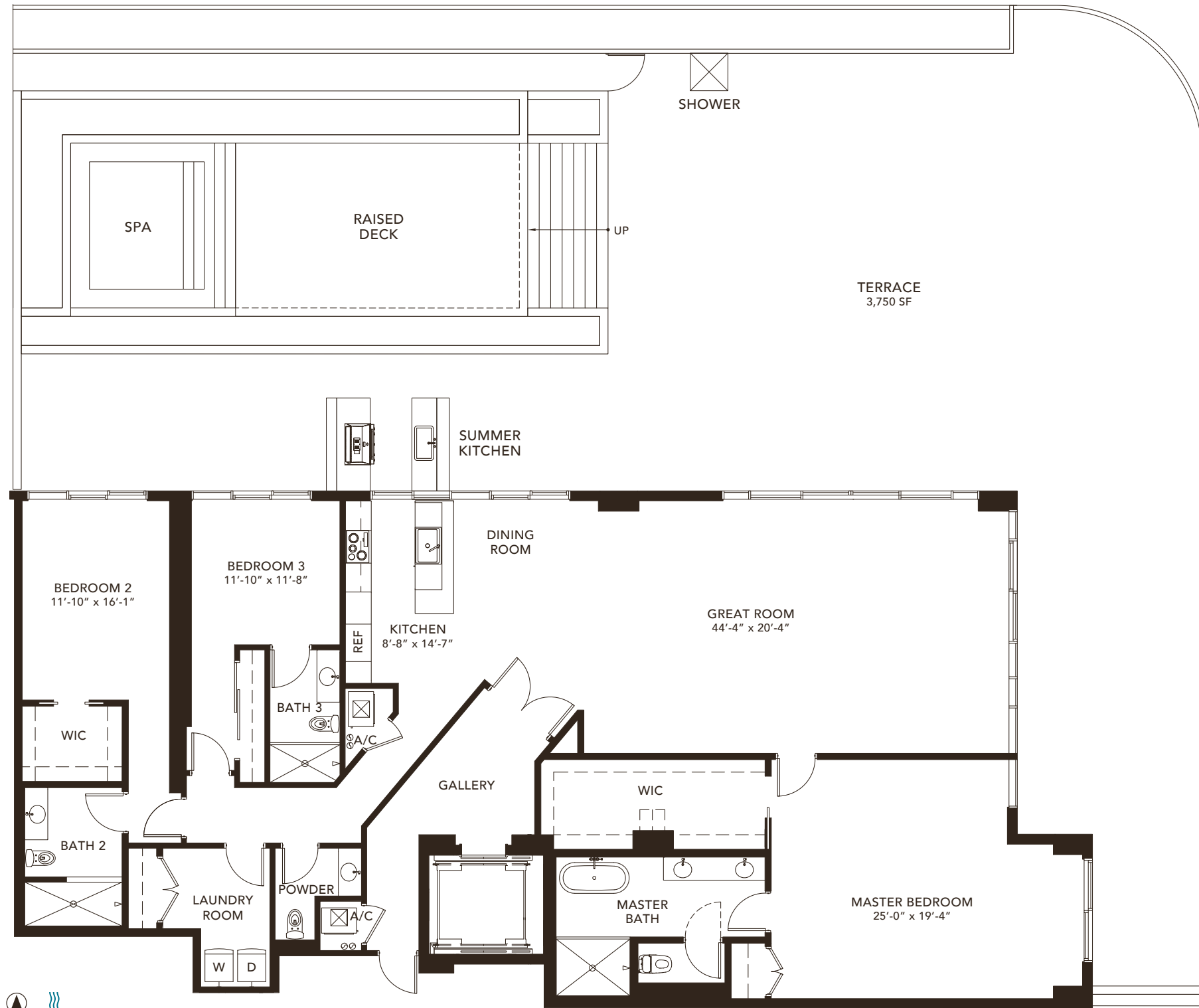
<b>3 BEDROOMS 3 BATHROOMS</b>	
A/C AREA	1,955 SF
TERRACE	2,285 SF
-----	
TOTAL	4,240 SF



TERRAZZA A

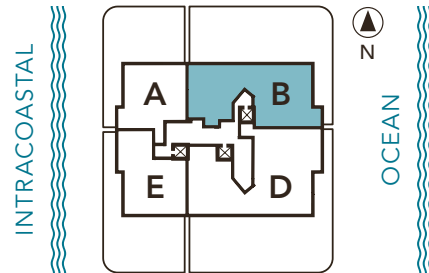
2 BEDROOMS 2.5 BATHROOMS	
A/C AREA	1,760 SF
TERRACE	2,200 SF
TOTAL	3,960 SF





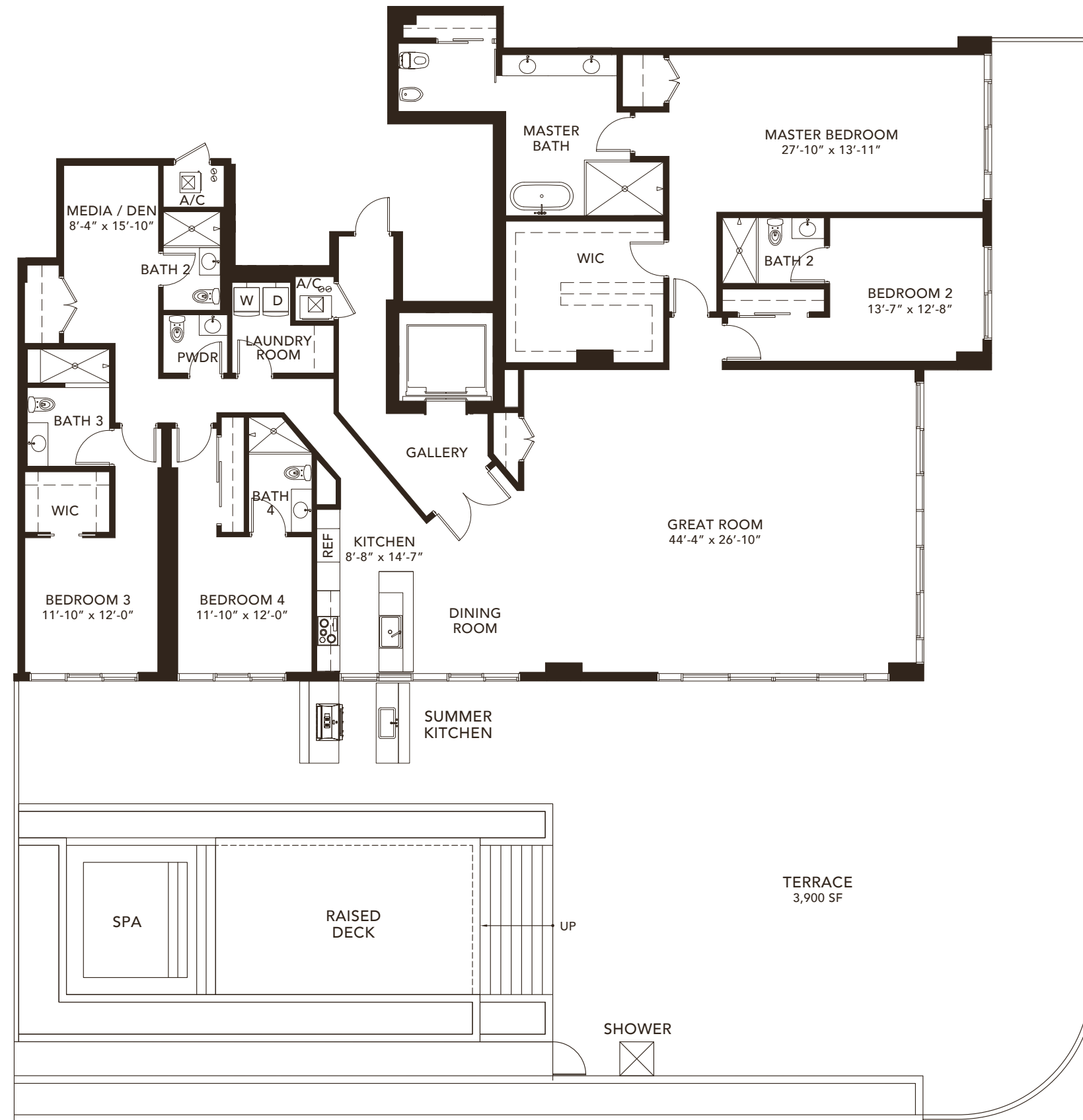
TERRAZZA B

3 BEDROOMS 3.5 BATHROOMS	
A/C AREA	3,095 SF
TERRACE	3,750 SF
TOTAL	6,845 SF



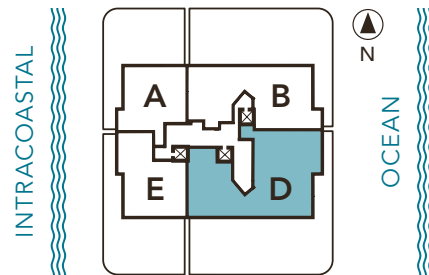
*Bernardo Fort*  
Bernardo Fort Brescia

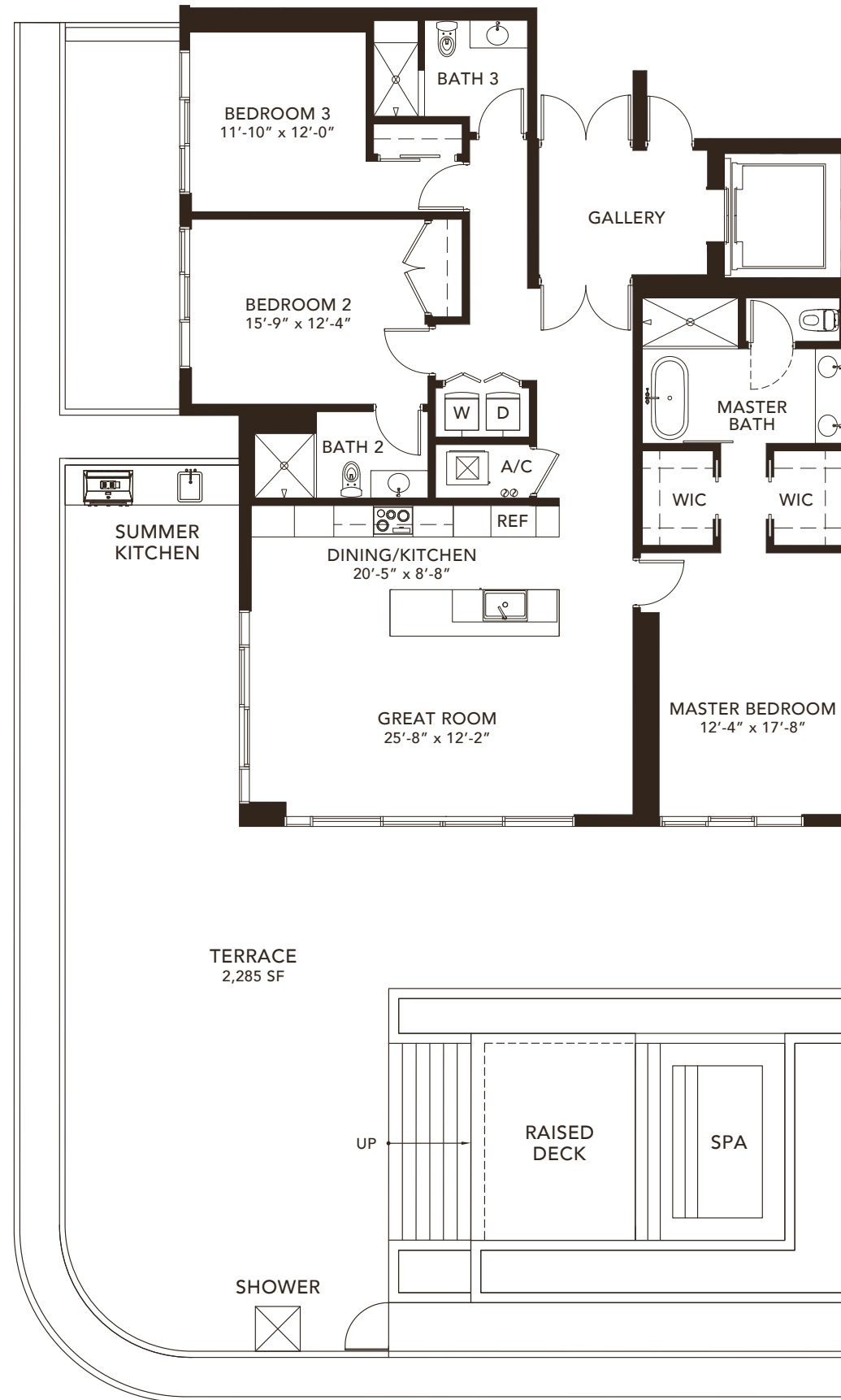




TERRAZZA D

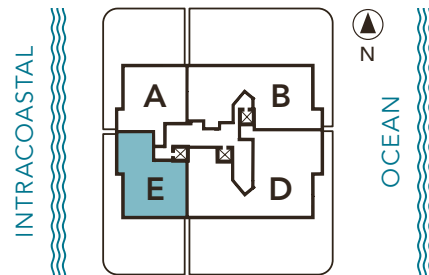
4 BEDROOMS + DEN	
4.5 BATHROOMS	
A/C AREA	3,940 SF
TERRACE	3,900 SF
TOTAL	7,840 SF





TERRAZZA E

3 BEDROOMS 3 BATHROOMS	
A/C AREA	1,955 SF
TERRACE	2,285 SF
TOTAL	4,240 SF






# Sabbia

BEACH

ON THE OCEAN | OF THE OCEAN

730 NORTH OCEAN BOULEVARD, POMPANO BEACH, FL 33062

 This offering is subject to errors, omissions, prior sale, change of price, or withdrawal without notice, and not intended to solicit currently listed property. This is not an offer to sell or solicitation of offers to buy condominium units in states where such offer or solicitation cannot be made. Prices, plans, and specifications are subject to change without notice. Void in states where prohibited. Additional restrictions may apply. Artist's conceptual renderings.

ORAL REPRESENTATION CANNOT BE RELIED UPON AS CORRECTLY STATING THE REPRESENTATIONS OF THE DEVELOPER. FOR CORRECT REPRESENTATIONS, MAKE REFERENCE TO THIS BROCHURE AND TO THE DOCUMENTS REQUIRED BY SECTION 718.503, FLORIDA STATUTES, TO BE FURNISHED BY A DEVELOPER TO A BUYER OR LESSEE.

Developed by:

**FERNBROOK**  
FLORIDA

Exclusive Sales  
and Marketing by:

**HEMISPHERE**

Architecture by:

**ARQUITECTONICA**

Interior Design by:

*Interiors* by **STEVEN G. MA**  
Interior Design

Advertising & Interactive by **LGD** Miami





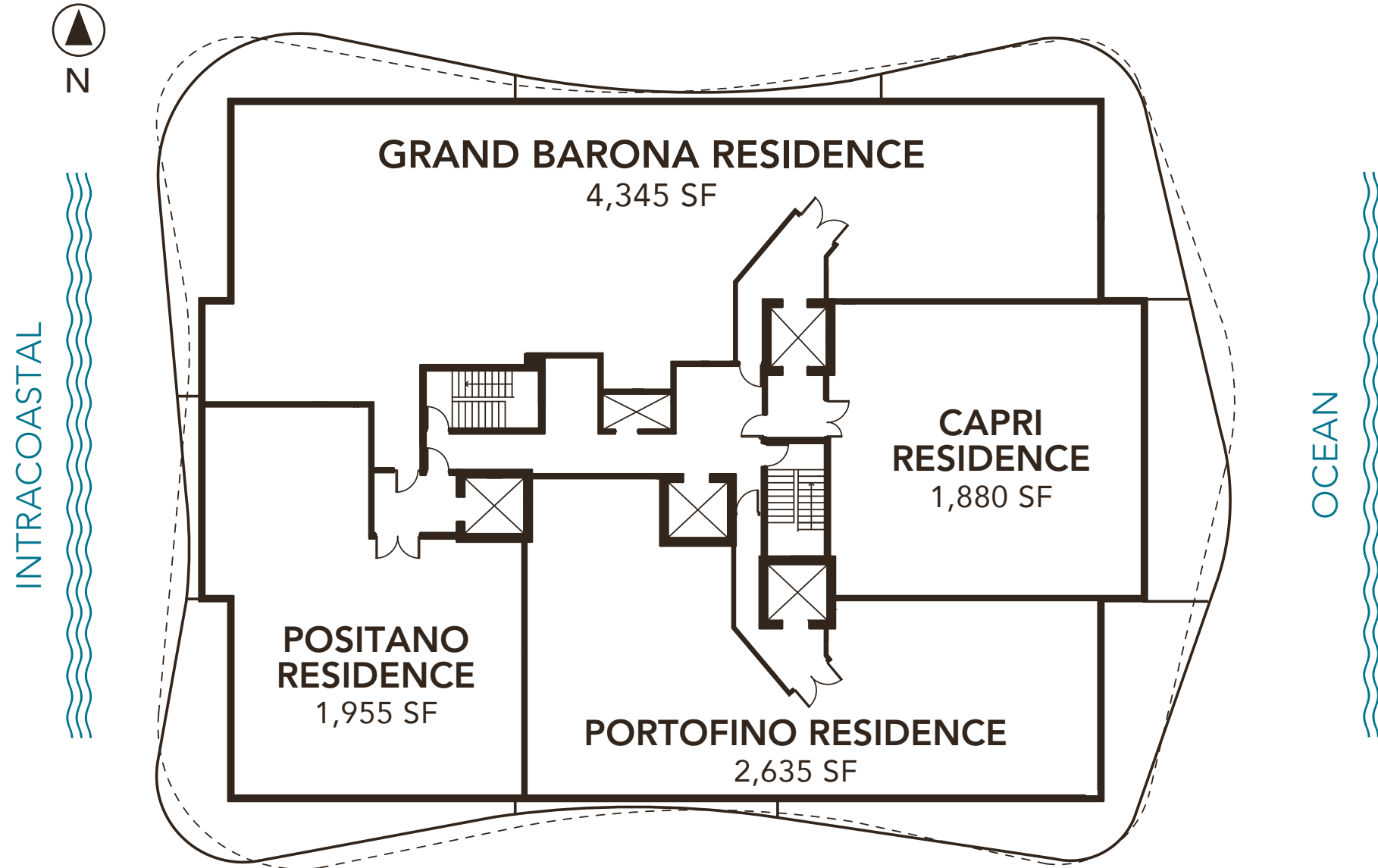
Sabbia  
BEACH

SKY RESIDENCE  
FLOOR PLANS

FLOORS 16 & 17



KEY PLAN  
FLOOR 16



GRAND BARONA  
RESIDENCE

<b>4 BEDROOMS + DEN</b>	
<b>5.5 BATHROOMS</b>	
A/C AREA	4,345 SF
BALCONY	1,070 SF
TOTAL	5,415 SF

CAPRI  
RESIDENCE

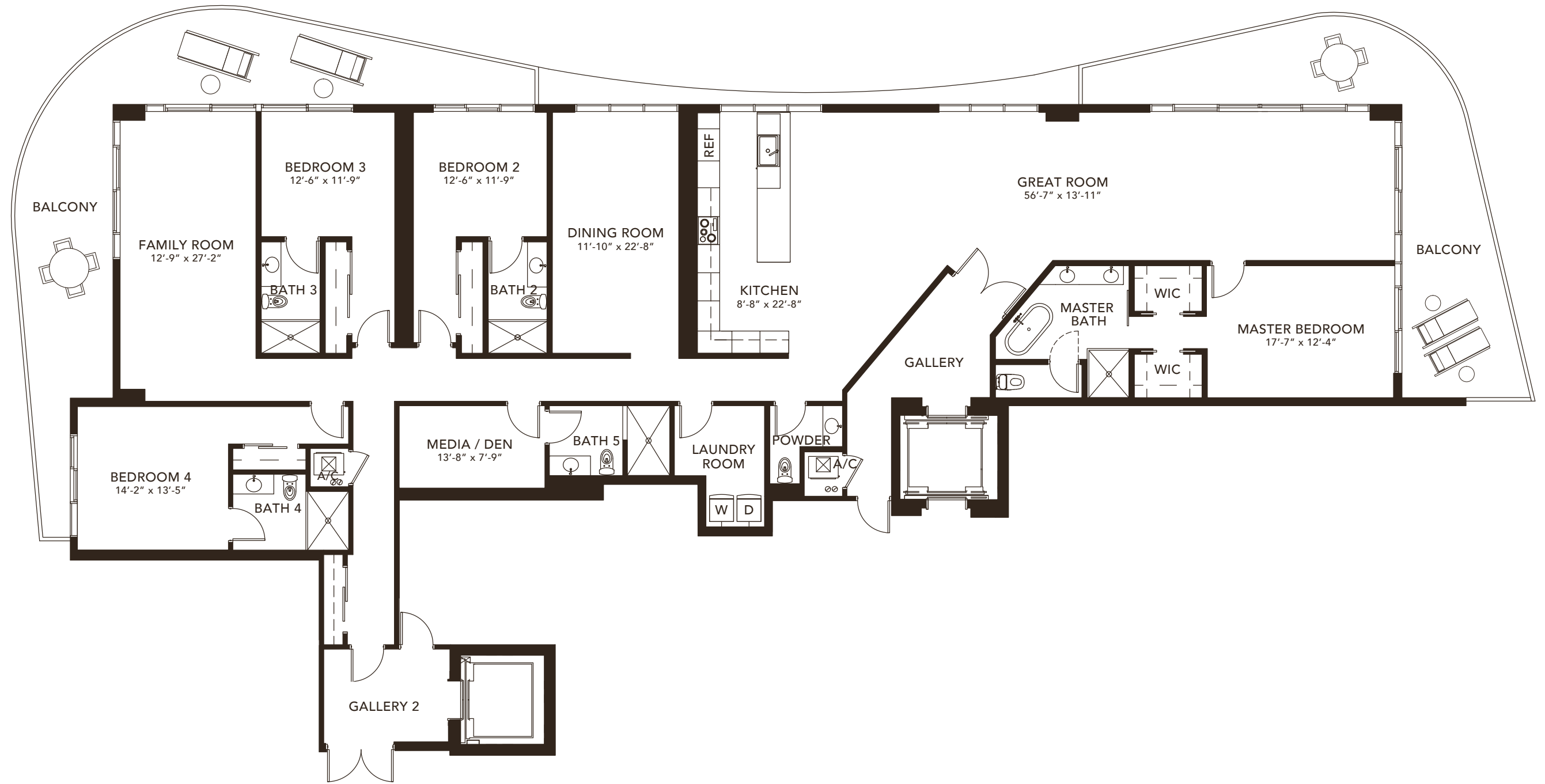
<b>2 BEDROOMS + DEN</b>	
<b>2.5 BATHROOMS</b>	
A/C AREA	1,880 SF
BALCONY	420 SF
TOTAL	2,300 SF

PORTOFINO  
RESIDENCE

<b>3 BEDROOMS + DEN</b>	
<b>4.5 BATHROOMS</b>	
A/C AREA	2,635 SF
BALCONY	565 SF
TOTAL	3,200 SF

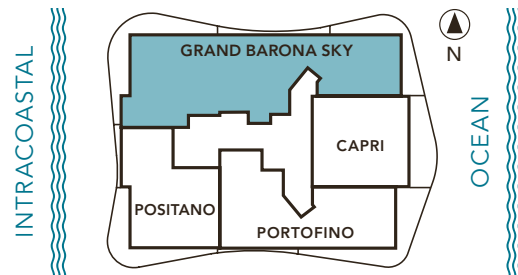
POSITANO  
RESIDENCE

<b>3 BEDROOMS</b>	
<b>3 BATHROOMS</b>	
A/C AREA	1,955 SF
BALCONY	490 SF
TOTAL	2,445 SF



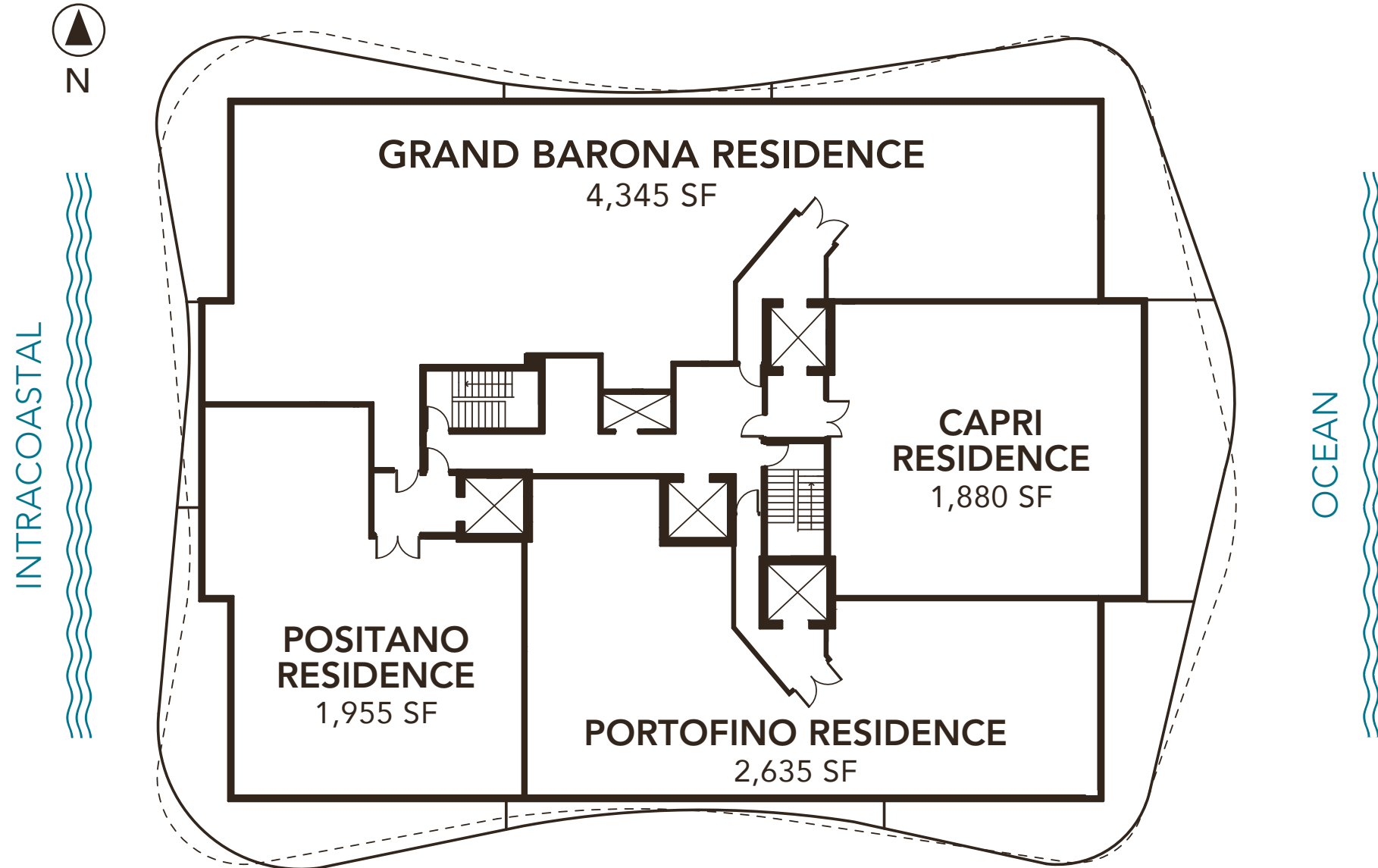
GRAND BARONA  
RESIDENCE

<b>4 BEDROOMS + DEN</b>	
<b>5.5 BATHROOMS</b>	
A/C AREA	4,345 SF
BALCONY	1,070 SF
<hr/>	
TOTAL	5,415 SF



*Bernardo Fort Brescia*  
Bernardo Fort Brescia

KEY PLAN  
FLOOR 17



GRAND BARONA  
RESIDENCE

<b>4 BEDROOMS + DEN</b>	
<b>5.5 BATHROOMS</b>	
A/C AREA	4,345 SF
BALCONY	1,055 SF
TOTAL	5,400 SF

CAPRI  
RESIDENCE

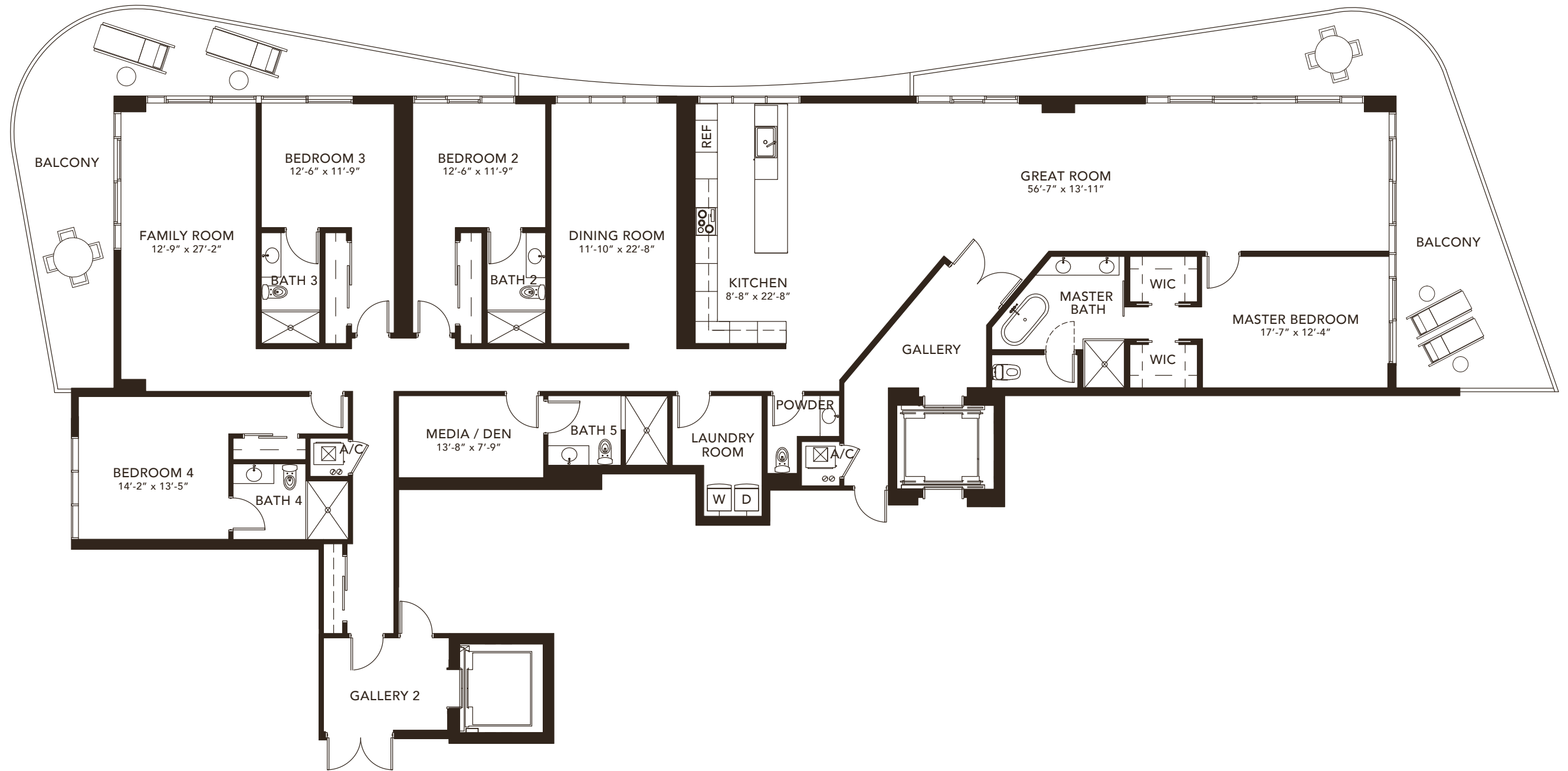
<b>2 BEDROOMS + DEN</b>	
<b>2.5 BATHROOMS</b>	
A/C AREA	1,880 SF
BALCONY	420 SF
TOTAL	2,300 SF

PORTOFINO  
RESIDENCE

<b>3 BEDROOMS + DEN</b>	
<b>4.5 BATHROOMS</b>	
A/C AREA	2,635 SF
BALCONY	480 SF
TOTAL	3,115 SF

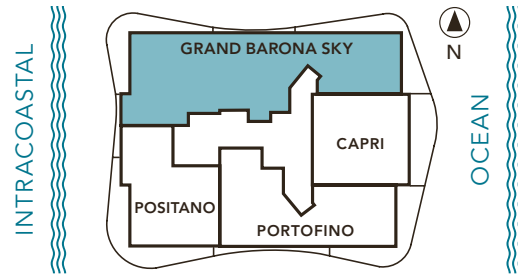
POSITANO  
RESIDENCE

<b>3 BEDROOMS</b>	
<b>3 BATHROOMS</b>	
A/C AREA	1,955 SF
BALCONY	585 SF
TOTAL	2,540 SF



GRAND BARONA  
RESIDENCE

<b>4 BEDROOMS + DEN</b>	
<b>5.5 BATHROOMS</b>	
A/C AREA	4,345 SF
BALCONY	1,055 SF
TOTAL	5,400 SF



*Bernardo Fort Brescia*  
Bernardo Fort Brescia






# Sabbia

BEACH

ON THE OCEAN | OF THE OCEAN

730 NORTH OCEAN BOULEVARD, POMPANO BEACH, FL 33062

 This offering is subject to errors, omissions, prior sale, change of price, or withdrawal without notice, and not intended to solicit currently listed property. This is not an offer to sell or solicitation of offers to buy condominium units in states where such offer or solicitation cannot be made. Prices, plans, and specifications are subject to change without notice. Void in states where prohibited. Additional restrictions may apply. Artist's conceptual renderings.

ORAL REPRESENTATION CANNOT BE RELIED UPON AS CORRECTLY STATING THE REPRESENTATIONS OF THE DEVELOPER. FOR CORRECT REPRESENTATIONS, MAKE REFERENCE TO THIS BROCHURE AND TO THE DOCUMENTS REQUIRED BY SECTION 718.503, FLORIDA STATUTES, TO BE FURNISHED BY A DEVELOPER TO A BUYER OR LESSEE.

Developed by:

**FERNBROOK**  
FLORIDA

Exclusive Sales  
and Marketing by:

  
HEMISPHERE

Architecture by:

**ARQUITECTONICA**

Interior Design by:

*Interiors* by **STEVEN G. MA**  
Interior Design

Advertising & Interactive by **LGD** Miami





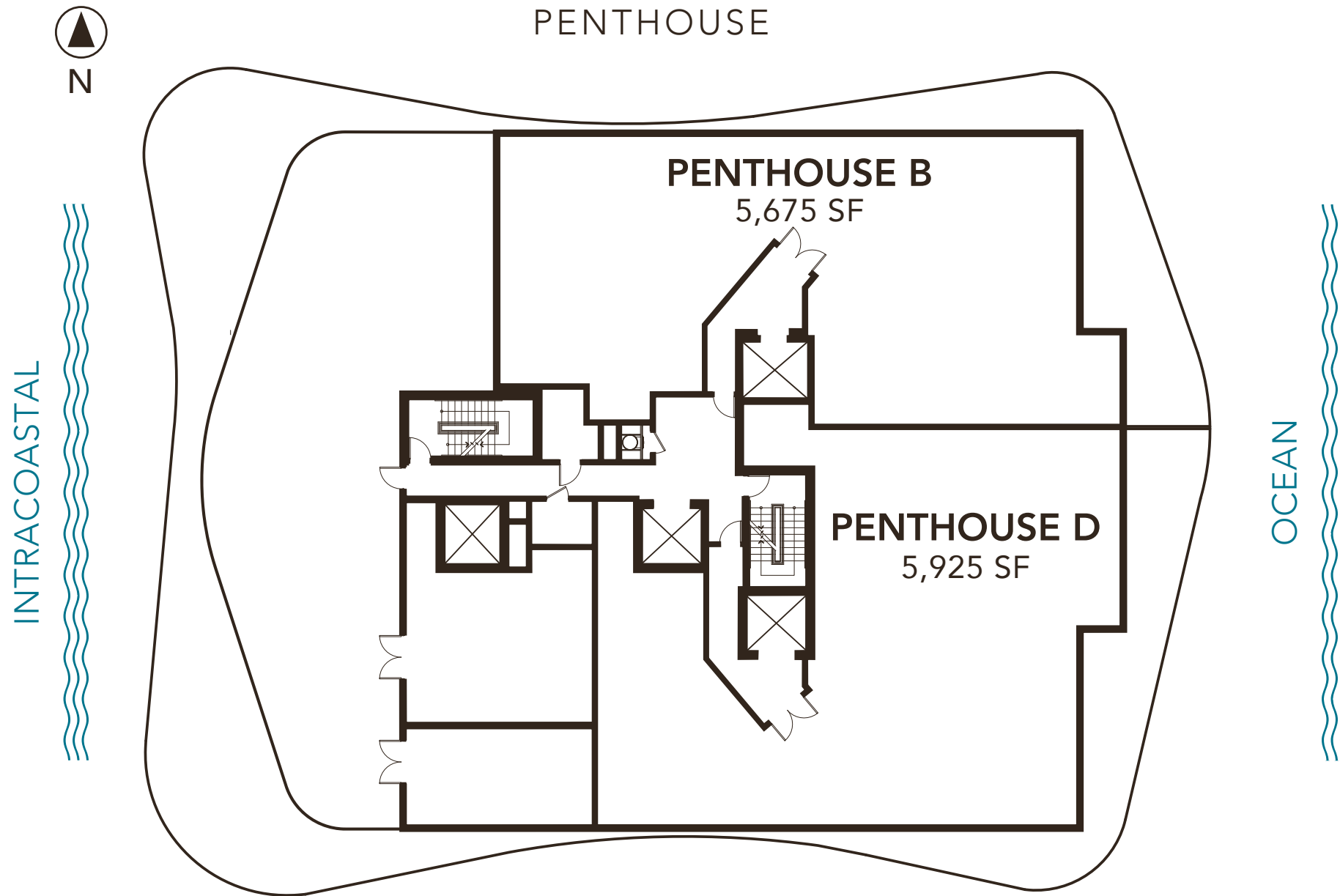
Sabbia  
BEACH

PENTHOUSE  
FLOOR PLANS

FLOORS 19 & 20



KEY PLAN  
PENTHOUSE



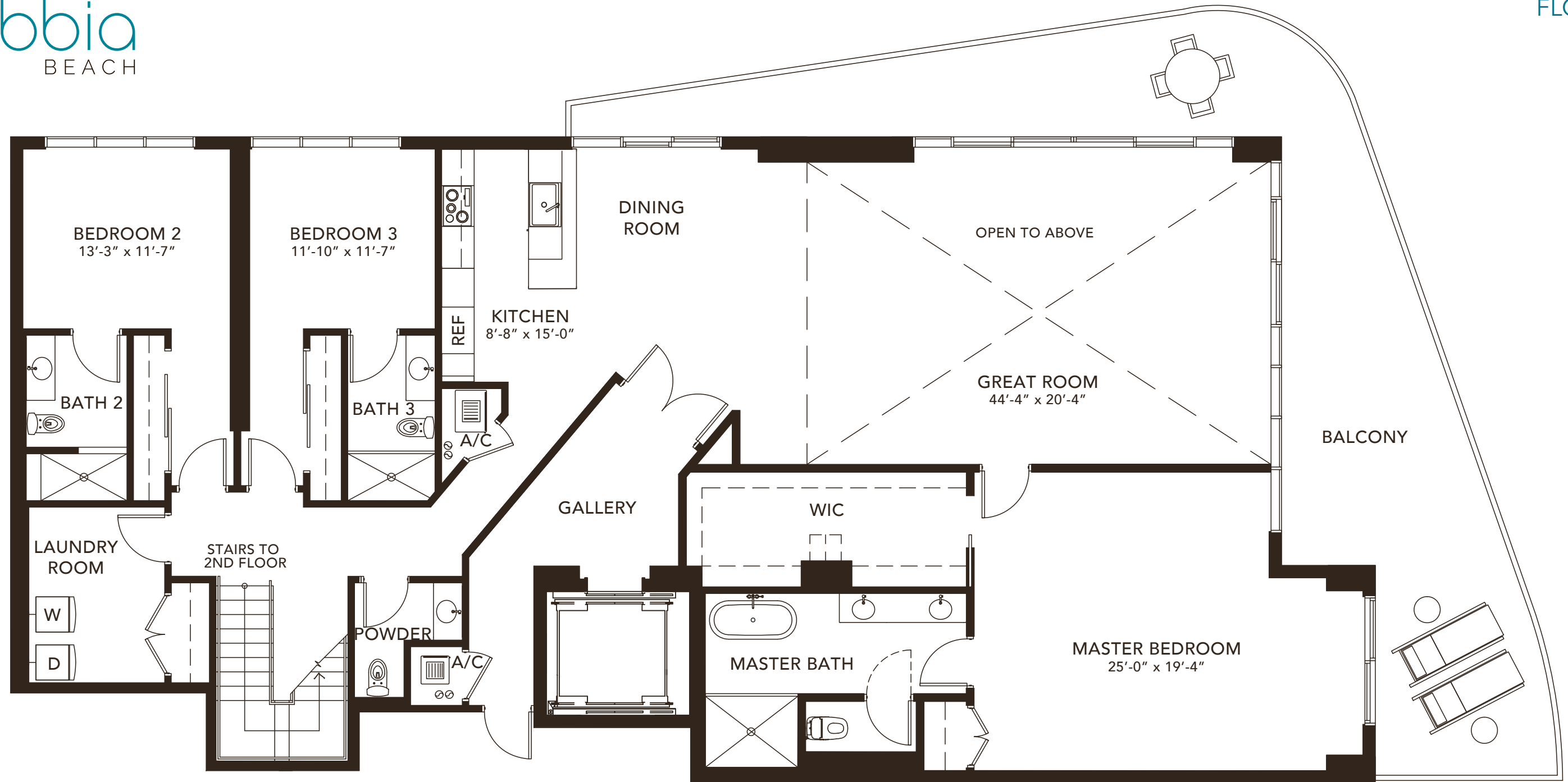
PENTHOUSE B

<b>6 BEDROOMS 6.5 BATHROOMS</b>	
A/C AREA	5,675 SF
BALCONY	950 SF
-----	
TOTAL	6,625 SF

PENTHOUSE D

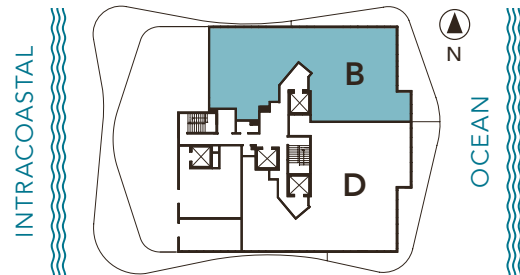
<b>5 BEDROOMS 6 BATHROOMS</b>	
A/C AREA	5,925 SF
BALCONY	1,220 SF
-----	
TOTAL	7,145 SF

*Bernardo Fort*  
Bernardo Fort Brescia



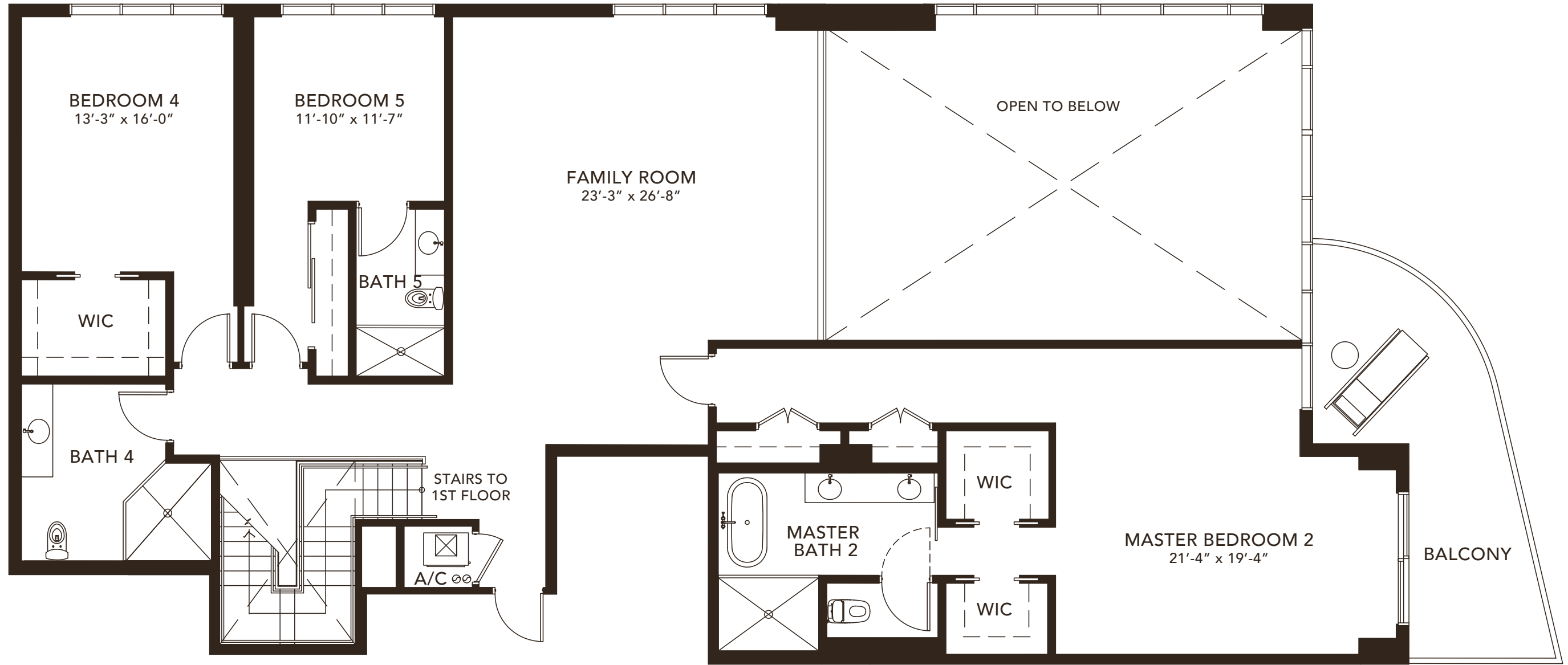
**PENTHOUSE B  
FIRST FLOOR**

<b>6 BEDROOMS</b>	
<b>6.5 BATHROOMS</b>	
A/C AREA	5,675 SF
BALCONY	950 SF
<b>TOTAL</b>	<b>6,625 SF</b>



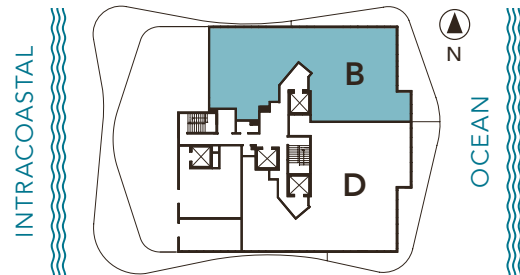
*Bernardo Fort Brescia*  
Bernardo Fort Brescia



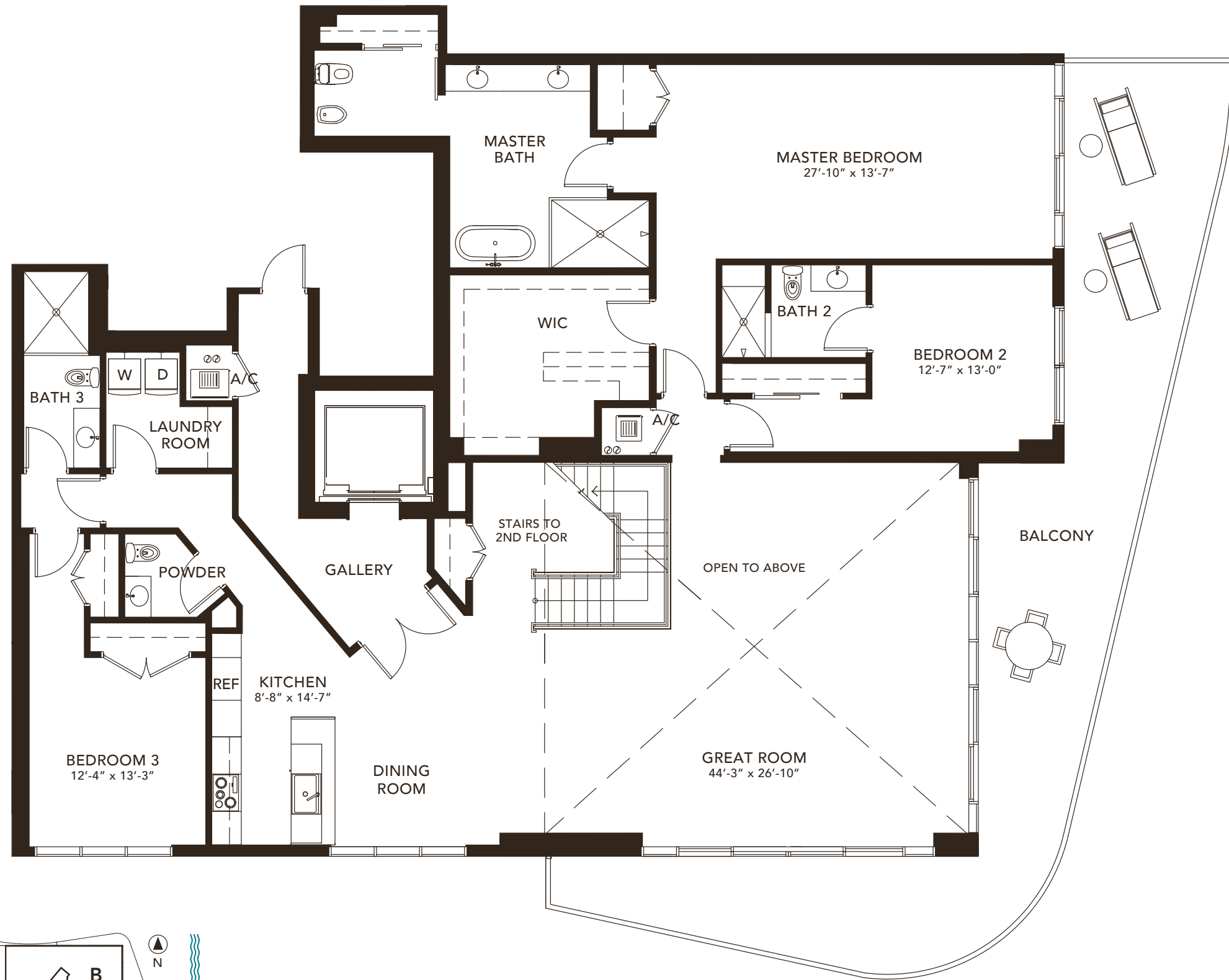


PENTHOUSE B  
SECOND FLOOR

6 BEDROOMS 6.5 BATHROOMS	
A/C AREA	5,675 SF
BALCONY	950 SF
TOTAL	6,625 SF

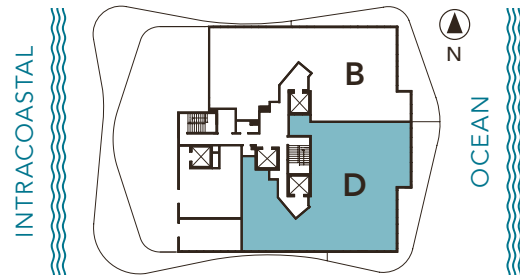


*Bernardo Fort*  
Bernardo Fort Brescia

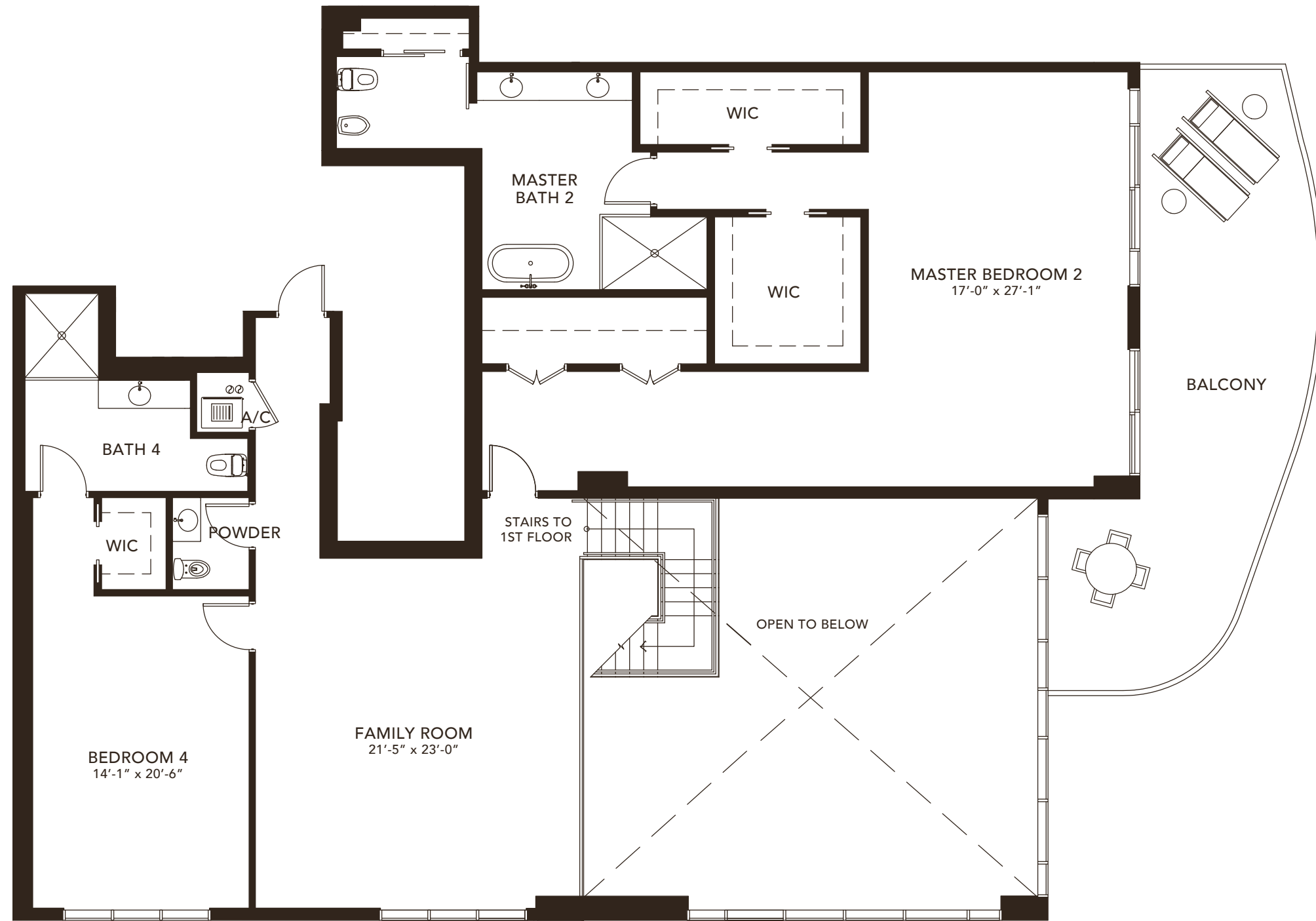


PENTHOUSE D  
FIRST FLOOR

<b>5 BEDROOMS</b>	
<b>6 BATHROOMS</b>	
A/C AREA	5,925 SF
BALCONY	1,220 SF
<b>TOTAL</b>	<b>7,145 SF</b>

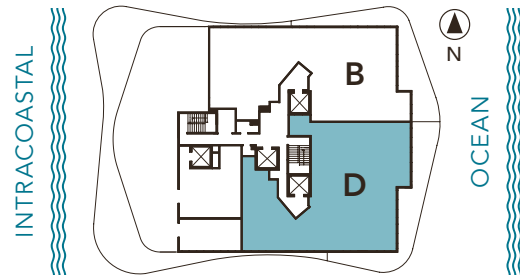


*Bernardo Fort*  
Bernardo Fort Brescia



PENTHOUSE D  
SECOND FLOOR

<b>5 BEDROOMS 6 BATHROOMS</b>	
A/C AREA	5,925 SF
BALCONY	1,220 SF
<b>TOTAL</b>	<b>7,145 SF</b>



*Bernardo Fort Brescia*  
Bernardo Fort Brescia




# Sabbia

BEACH

ON THE OCEAN | OF THE OCEAN

730 NORTH OCEAN BOULEVARD, POMPANO BEACH, FL 33062

 This offering is subject to errors, omissions, prior sale, change of price, or withdrawal without notice, and not intended to solicit currently listed property. This is not an offer to sell or solicitation of offers to buy condominium units in states where such offer or solicitation cannot be made. Prices, plans, and specifications are subject to change without notice. Void in states where prohibited. Additional restrictions may apply. Artist's conceptual renderings.

ORAL REPRESENTATION CANNOT BE RELIED UPON AS CORRECTLY STATING THE REPRESENTATIONS OF THE DEVELOPER. FOR CORRECT REPRESENTATIONS, MAKE REFERENCE TO THIS BROCHURE AND TO THE DOCUMENTS REQUIRED BY SECTION 718.503, FLORIDA STATUTES, TO BE FURNISHED BY A DEVELOPER TO A BUYER OR LESSEE.

Developed by:

**FERNBROOK**  
FLORIDA

Exclusive Sales  
and Marketing by:

  
HEMISPHERE

Architecture by:

**ARQUITECTONICA**

Interior Design by:

*Interiors* by **STEVEN G. MA**  
Interior Design

Advertising & Interactive by **LGD** Miami





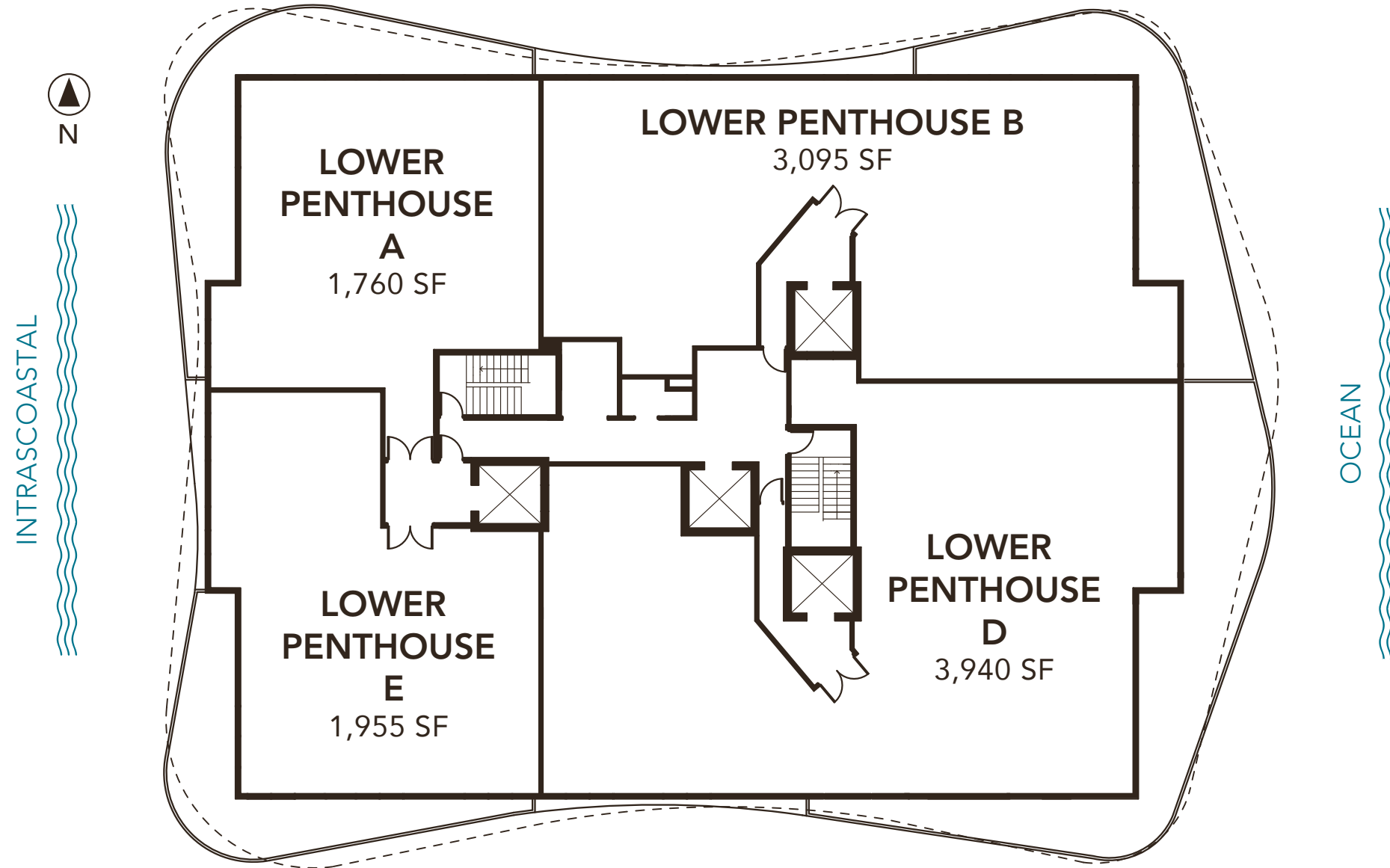
Sabbia  
BEACH

LOWER PENTHOUSE  
FLOOR PLANS

FLOOR 18



KEY PLAN  
FLOOR 18



LOWER  
PENTHOUSE A

<b>2 BEDROOMS 2.5 BATHROOMS</b>	
A/C AREA	1,760 SF
BALCONY	590 SF
TOTAL	2,350 SF

LOWER  
PENTHOUSE B

<b>3 BEDROOMS 3.5 BATHROOMS</b>	
A/C AREA	3,095 SF
BALCONY	585 SF
TOTAL	3,680 SF

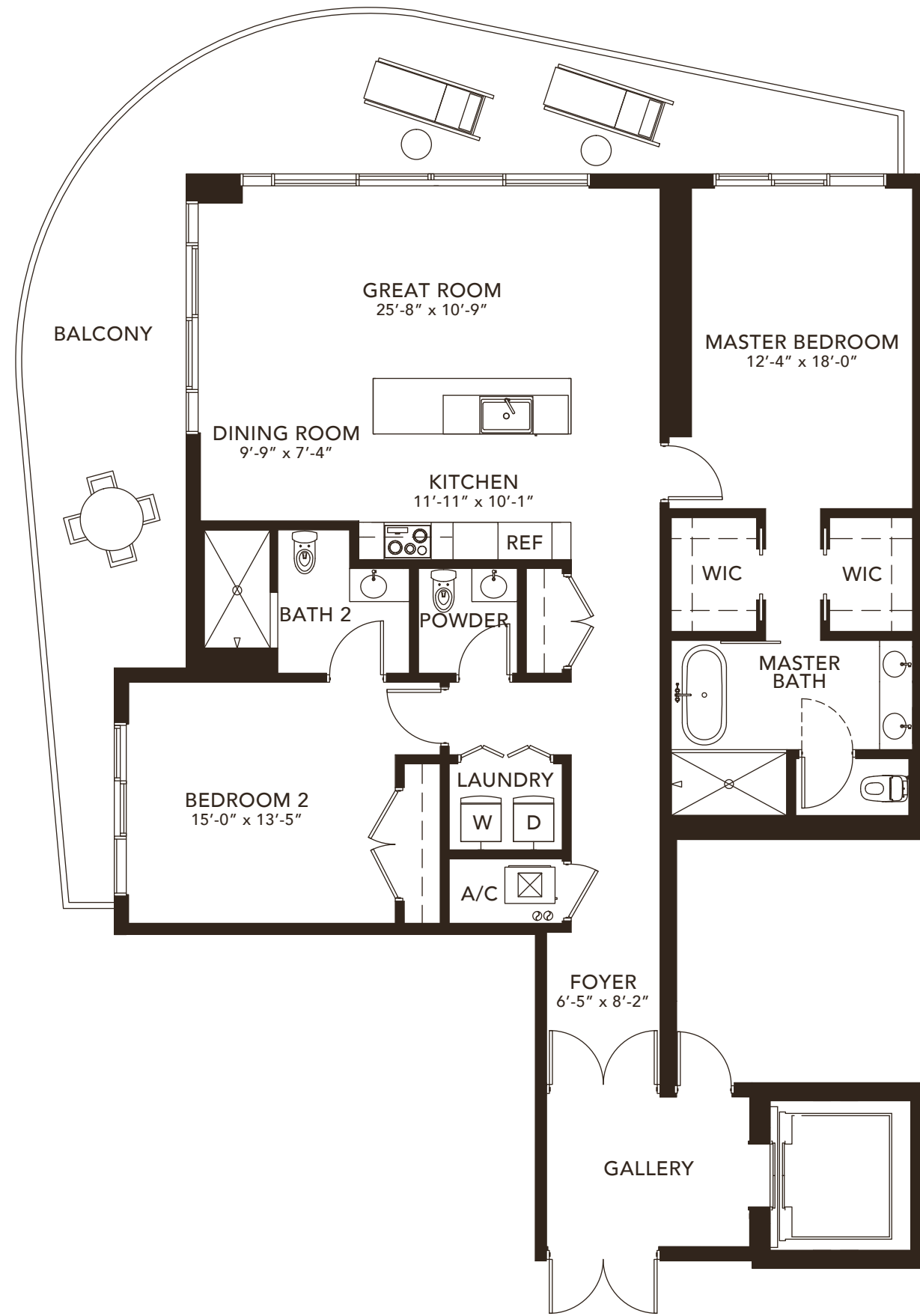
LOWER  
PENTHOUSE D

<b>4 BEDROOMS + DEN 5.5 BATHROOMS</b>	
A/C AREA	3,940 SF
BALCONY	880 SF
TOTAL	4,820 SF

LOWER  
PENTHOUSE E

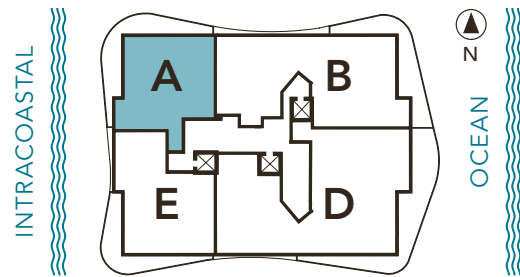
<b>3 BEDROOMS 3 BATHROOMS</b>	
A/C AREA	1,955 SF
BALCONY	490 SF
TOTAL	2,445 SF

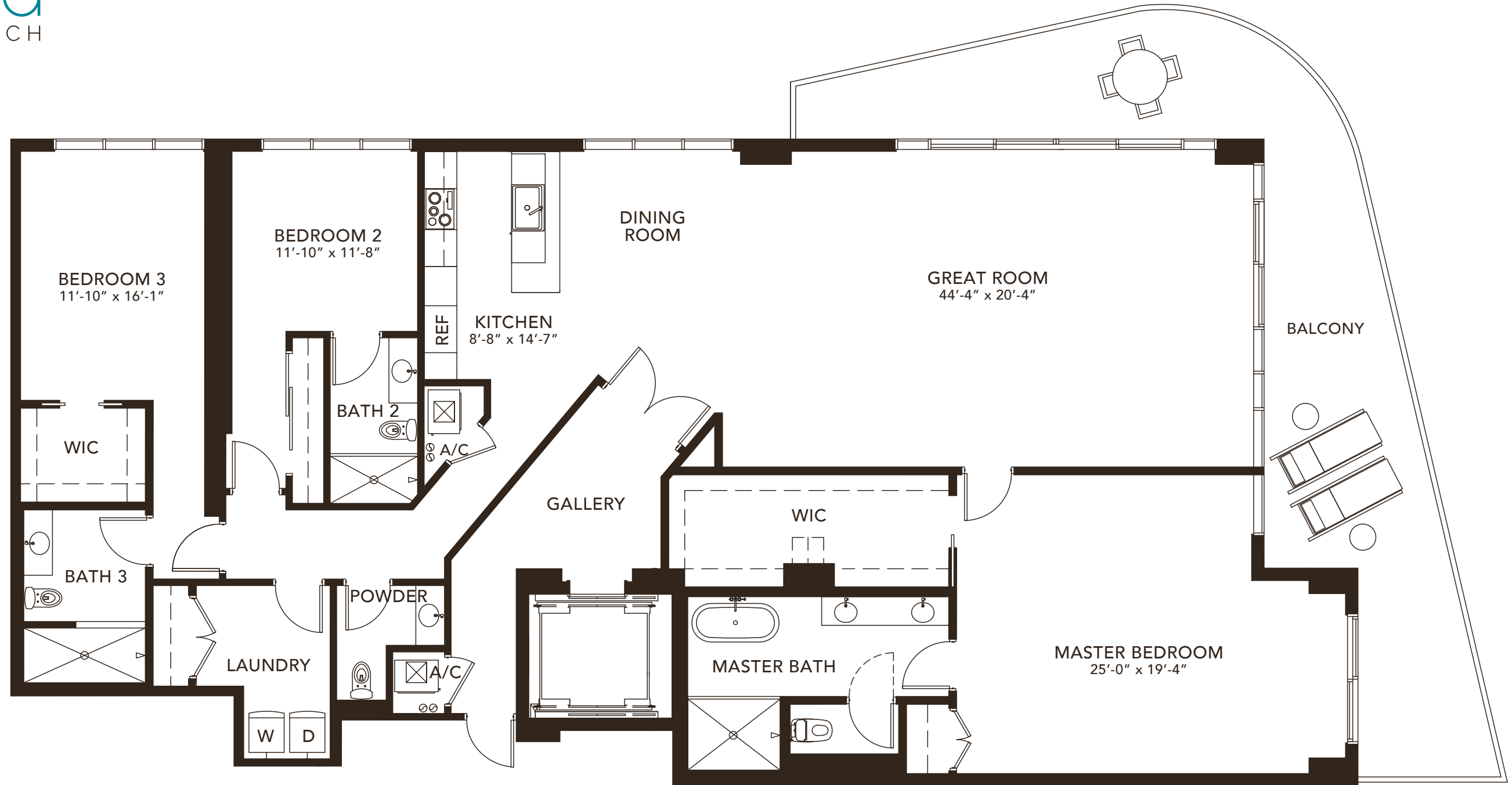
*Bernardo Fort*  
Bernardo Fort Brescia



LOWER  
PENTHOUSE A

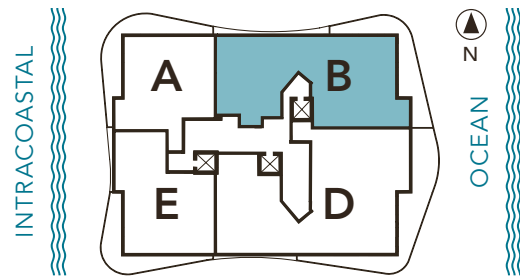
2 BEDROOMS 2.5 BATHROOMS	
A/C AREA	1,760 SF
BALCONY	590 SF
TOTAL	2,350 SF



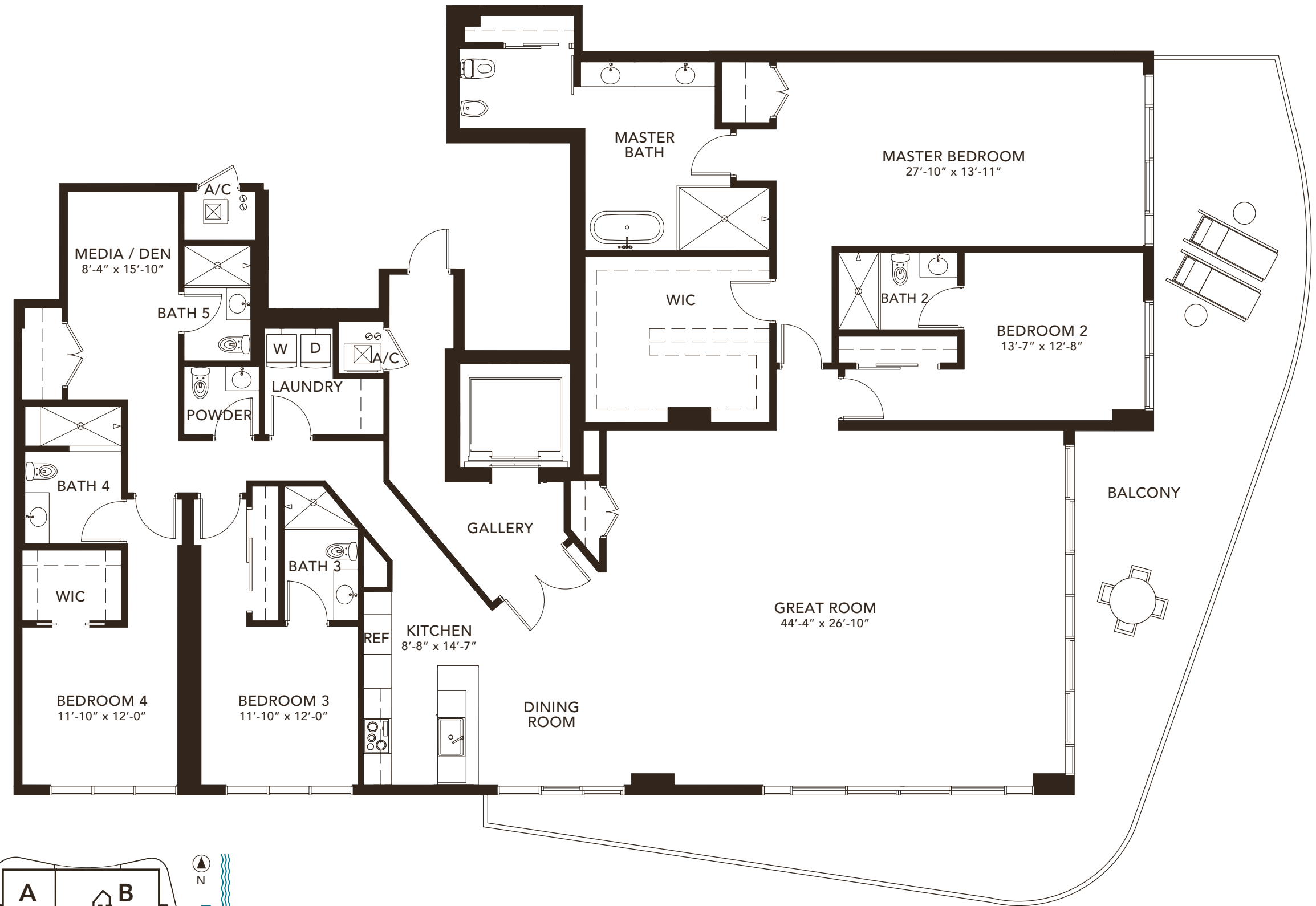


LOWER  
PENTHOUSE B

3 BEDROOMS 3.5 BATHROOMS	
A/C AREA	3,095 SF
BALCONY	585 SF
TOTAL	3,680 SF

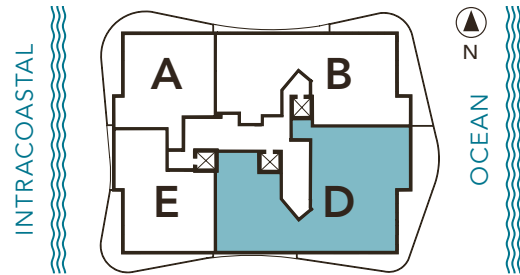


*Bernardo Fort*  
Bernardo Fort Brescia



LOWER  
PENTHOUSE D

4 BEDROOMS + DEN	
5.5 BATHROOMS	
A/C AREA	3,940 SF
BALCONY	880 SF
TOTAL	4,820 SF

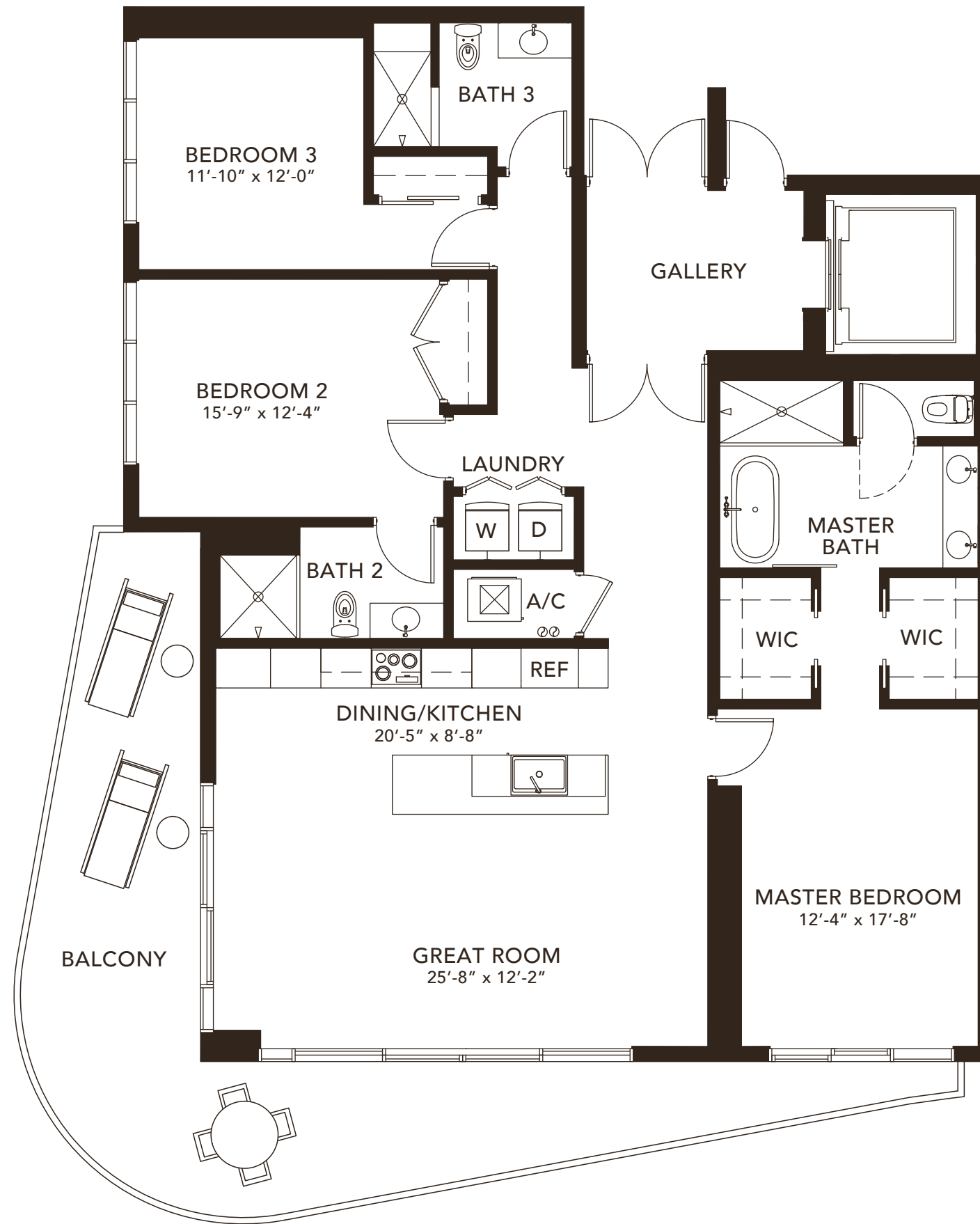
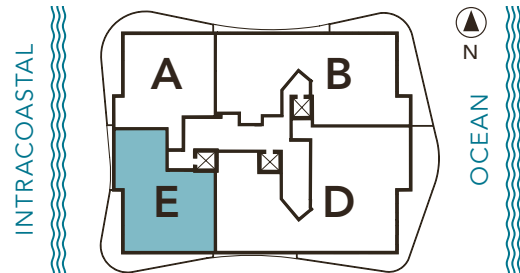


*Bernardo Fort Brescia*  
Bernardo Fort Brescia



LOWER  
PENTHOUSE E

3 BEDROOMS 3 BATHROOMS	
A/C AREA	1,955 SF
BALCONY	490 SF
TOTAL	2,445 SF






# Sabbia

BEACH

ON THE OCEAN | OF THE OCEAN

730 NORTH OCEAN BOULEVARD, POMPANO BEACH, FL 33062

 This offering is subject to errors, omissions, prior sale, change of price, or withdrawal without notice, and not intended to solicit currently listed property. This is not an offer to sell or solicitation of offers to buy condominium units in states where such offer or solicitation cannot be made. Prices, plans, and specifications are subject to change without notice. Void in states where prohibited. Additional restrictions may apply. Artist's conceptual renderings.

ORAL REPRESENTATION CANNOT BE RELIED UPON AS CORRECTLY STATING THE REPRESENTATIONS OF THE DEVELOPER. FOR CORRECT REPRESENTATIONS, MAKE REFERENCE TO THIS BROCHURE AND TO THE DOCUMENTS REQUIRED BY SECTION 718.503, FLORIDA STATUTES, TO BE FURNISHED BY A DEVELOPER TO A BUYER OR LESSEE.

Developed by:

**FERNBROOK**  
FLORIDA

Exclusive Sales  
and Marketing by:

  
HEMISPHERE

Architecture by:

**ARQUITECTONICA**

Interior Design by:

*Interiors* by **STEVEN G. MA**  
Interior Design

Advertising & Interactive by **LGD** Miami